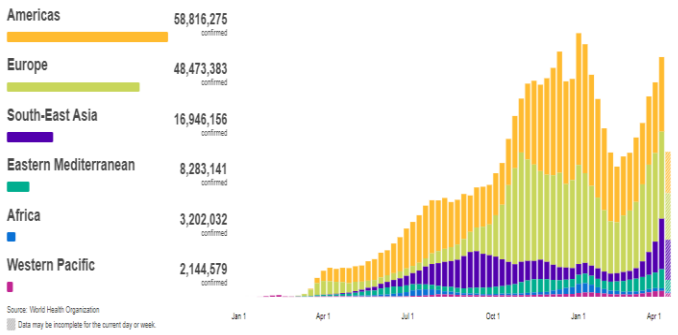
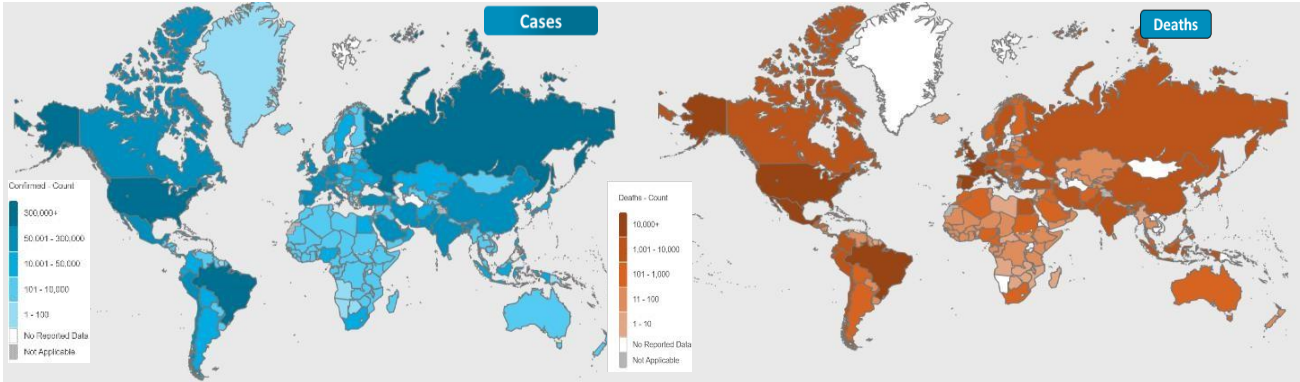




# NATIONAL COMMAND AND OPERATIONS CENTRE SITUATION REPORT PART – I

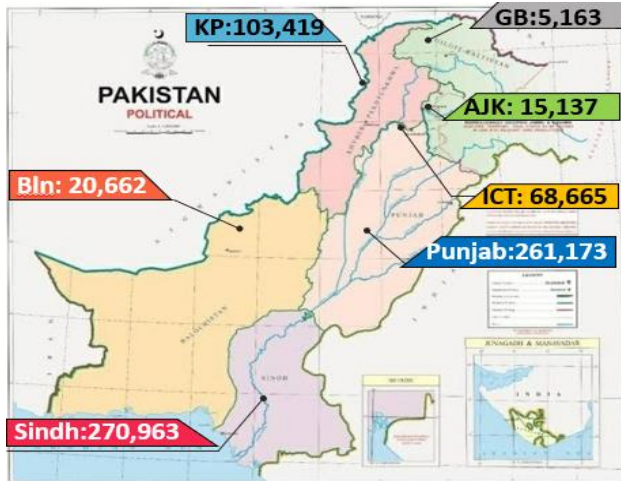
**Issued: 2:00 PM  
16 Apr 2021**

## Global Update



	Ranking	Countries	Cases	Cases Last 24 Hrs	Deaths	Deaths Last 24 Hrs	Ranking Change
Global		World	139,667,209	837,586	2,998,862	13,858	
	1	USA	32,224,139	74,479	578,993	895	
	3	Brazil	13,758,093	80,529	365,954	3,774	
	4	France	5,187,879	38,045	100,073	296	
	5	Russia	4,675,153	8,944	104,398	398	
	6	UK	4,380,976	2,672	127,191	30	
Regional	9	Spain	3,396,685	9,663	76,882	126	
	2	India	14,287,740	216,850	174,335	1,183	
	15	Iran	2,168,872	25,078	65,680	321	
	31	Pakistan	745,182	5,364	15,982	110	
	33	Bangladesh	707,362	4,192	10,081	94	
103	Afghanistan	57,612	78	2,535	2		

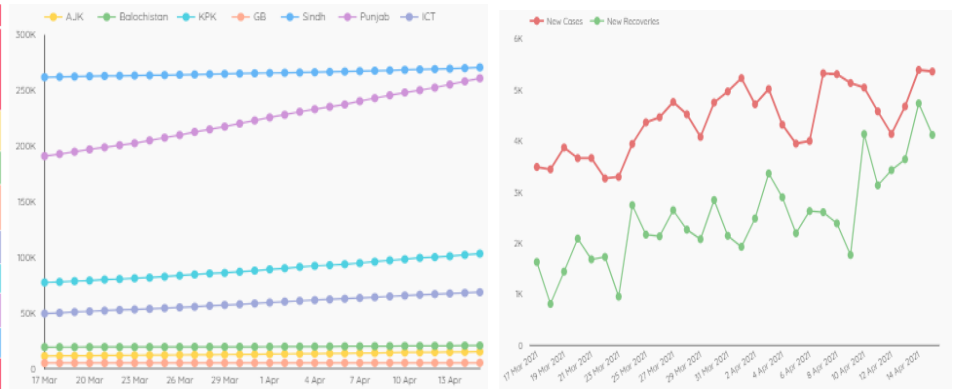
## Pakistan COVID Update



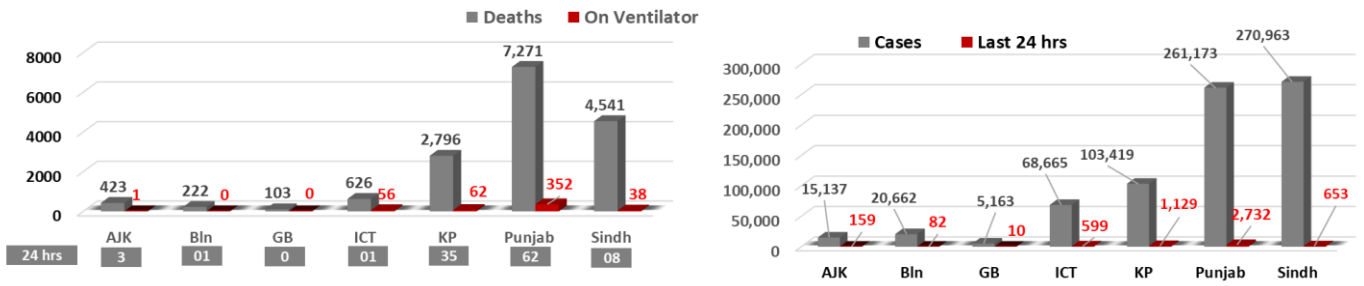
## Province-Wise COVID Cases

Provinces	Lab Tests		Lab Confirmed Cases		
	Total Tests Conducted In Last 24 Hours	Total Tests Conducted till date	Previous	Last 24 hours	Cumulative
AJK	951	162,908	14,978	159	15,137
Balochistan	1,019	222,344	20,580	82	20,662
Gilgit Baltistan	565	105,032	5,153	10	5,163
ICT	5,968	1,407,177	68,066	599	68,665
KP	7,739	1,476,291	102,290	1,129	103,419
Punjab	35,257	4,194,987	258,441	2,732	261,173
Sindh	12,982	3,438,513	270,310	653	270,963
<b>Total</b>	<b>64,481</b>	<b>11,007,252</b>	<b>739,818</b>	<b>5,364</b>	<b>745,182</b>

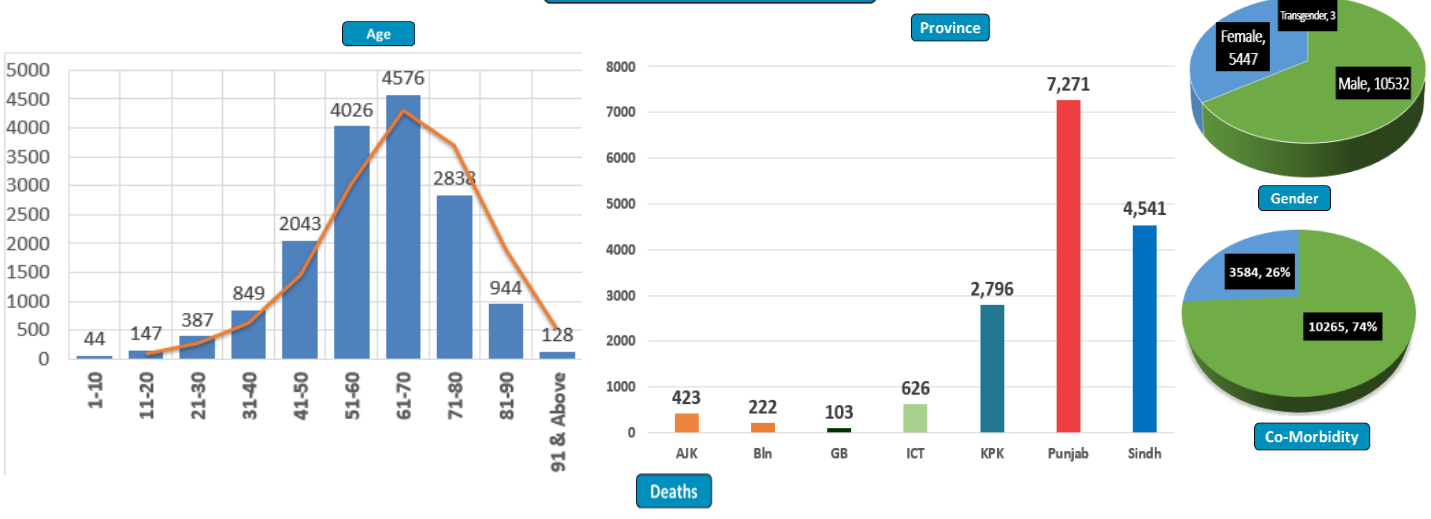
## Cases Vs Recovery



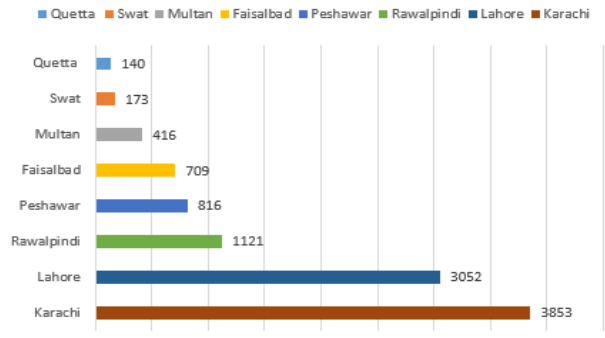
### Clinical Status of COVID



### Death Analysis

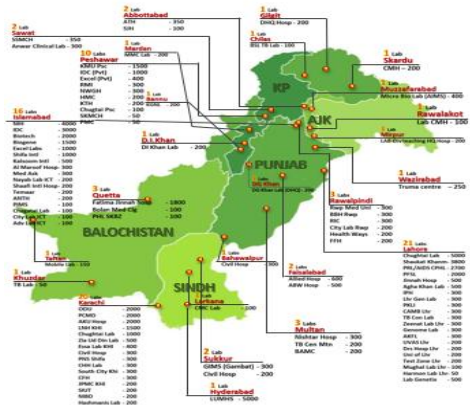
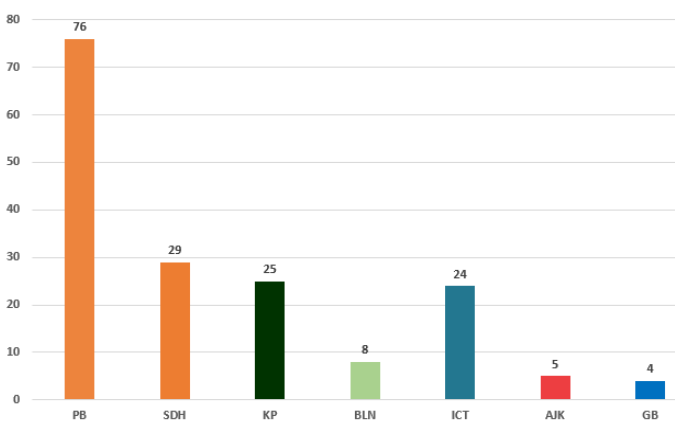


### Deaths



### Testing Facility

- Total Functioning Labs in Pakistan - 171
- Total Testing Capacity - 64,871
- Testing Conducted Last 24 hrs - 64,481



## 1. International

### a. COVID Status

- (1) COVID cases 138,016,972 & 2,971,388 deaths have been reported across the globe.
- (2) Europe has surpassed 1 Mn deaths from COVID-19.
- (3) India has reported a record 200,000 new COVID-19 cases.
- (4) Germany sees biggest single day Covid case rise of 29,426 cases since January.

## 2. National

### a. COVID Status

- (1) National positivity ratio was recorded at 8.31%.
- (2) Pakistan has reported 4,123 COVID recoveries during last 24 hours

### b. Vent Status

- (1) 509 patients are on ventilators.
- (2) **88% vents allocated for COVID patients in Gujranwala have been occupied** (88% day before yesterday)
- (3) **Vent occupancy in Lahore has been reported at 82%**. (79% day before yesterday)
- (4) **81% vents allocated for COVID patients in Multan have been occupied.** (81% day before yesterday)
- (5) **51% vents allocated for COVID patients in ICT have been occupied.** (52% day before yesterday)

### c. Oxygen Status

- (1) **93% beds allocated for COVID patients in Swabi have been occupied** (95% day before yesterday)
- (2) **93% beds allocated for COVID patients in Charsadda have been occupied.** (93% day before yesterday)
- (3) **85% beds allocated for COVID patients in Gujranwala have been occupied** (85% day before yesterday)
- (4) **75% beds allocated for COVID patients in Peshawar have been occupied** (74% day before yesterday)
- (5) **74% beds allocated for COVID patients in Gujrat have been occupied.** (71% day before yesterday)
- (6) **68% beds allocated for COVID patients in Swat have been occupied** (68% day before yesterday)

- (7) **63% beds allocated for COVID patients in Rawalpindi have been occupied** (63% day before yesterday)
- (8) **57% beds allocated for COVID patients in ICT have been occupied** (57% day before yesterday)
- (9) **51% beds allocated for COVID patients in Lahore have been occupied** (51% day before yesterday)
- (10) **45% beds allocated for COVID patients in Faisalabad have been occupied** (45% day before yesterday)

d. **HCW (Health Care Workers) Status**

- (1) **30** new cases have been reported in HCWs, increasing the total to **15,551** while **14,743** have recovered (658 active cases)
- (2) Most cases in HCWs have been reported by Sindh 5,577
- (3) 150 deaths have been reported amongst HCWs. (94 doctors, Medical Student, 4 nurses, 51 paramedic staff).

e. **COVID Mortality (118 x Deaths)**

- (1) 112 (95%) deaths have occurred in hospitals.
- (2) **68 deaths have been reported by Punjab.**
- (3) **28 deaths have been reported in District Lahore. Most by any district**
- (4) National CFR was reported at 2.18 %.
- (5) 76 % deceased suffered from co-morbidities