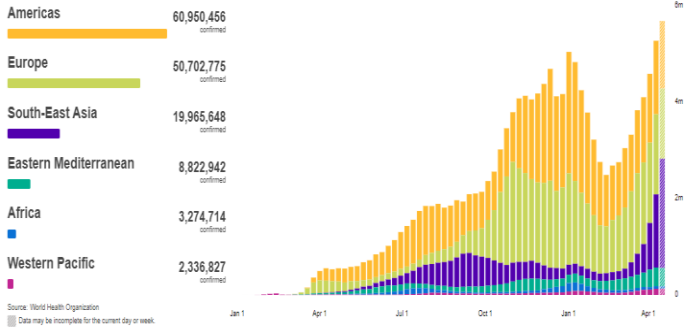
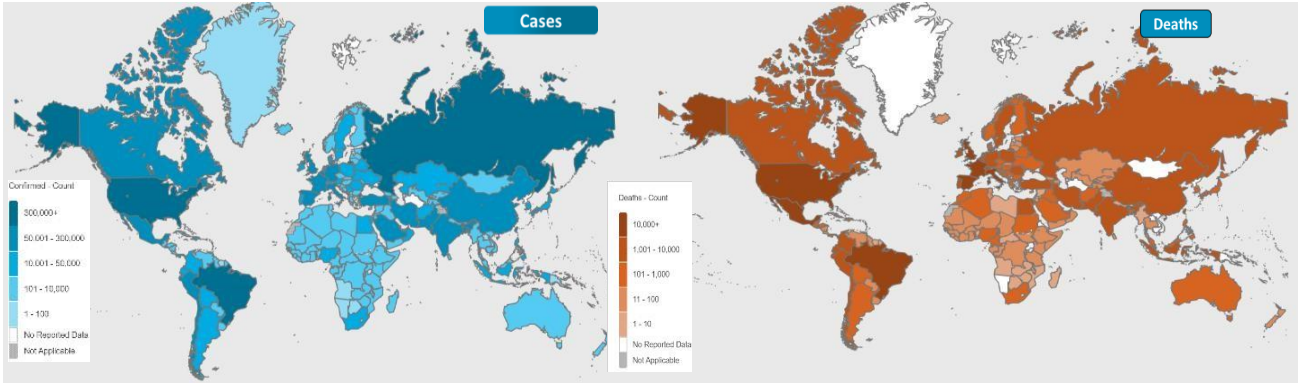




NATIONAL COMMAND AND OPERATIONS CENTRE SITUATION REPORT PART – I

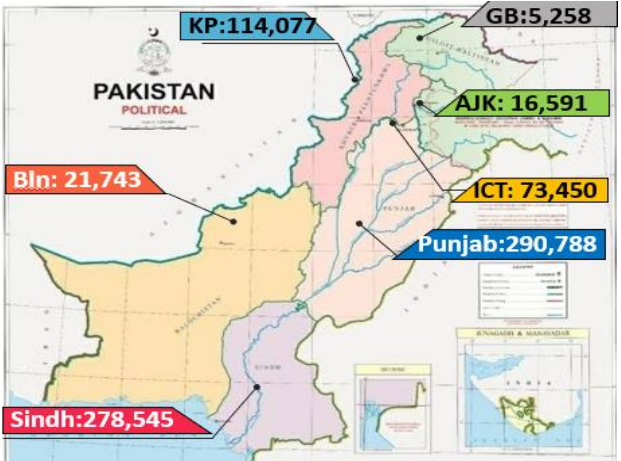
Issued: 2:00 PM
26 Apr 2021

Global Update



| Ranking | Countries | Cases | Cases Last 24 Hrs | Deaths | Deaths Last 24 Hrs | Ranking Change |
|---------|--------------|--------------------|-------------------|------------------|--------------------|----------------|
| | World | 147,780,745 | 727,363 | 3,122,428 | 9,924 | |
| 1 | USA | 32,824,389 | 34,736 | 586,152 | 273 | ↔ |
| 3 | Brazil | 14,340,787 | 32,572 | 390,925 | 1,316 | ↔ |
| 4 | France | 5,498,044 | 24,465 | 102,858 | 145 | ↔ |
| 5 | Russia | 4,762,569 | 8,780 | 108,232 | 332 | ↔ |
| 6 | Turkey | 4,629,969 | 38,553 | 38,358 | 347 | ↔ |
| 7 | UK | 4,404,882 | 1,712 | 127,428 | 11 | ↔ |
| 8 | Italy | 3,962,674 | 13,158 | 119,238 | 217 | ↔ |
| 9 | Spain | 3,468,617 | | 77,591 | | ↔ |
| 2 | India | 17,306,300 | 354,531 | 195,116 | 2,806 | ↔ |
| 14 | Iran | 2,396,204 | 19,165 | 69,574 | 454 | ↔ |
| 31 | Pakistan | 800,452 | 4,825 | 17,187 | 70 | ↔ |
| 33 | Bangladesh | 745,322 | 2,922 | 11,053 | 101 | ↔ |
| 104 | Afghanistan | 59,021 | 174 | 2,592 | 10 | ↔ |

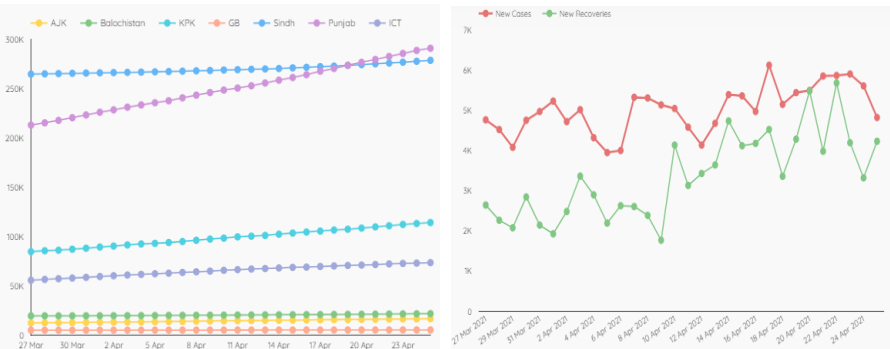
Pakistan COVID Update



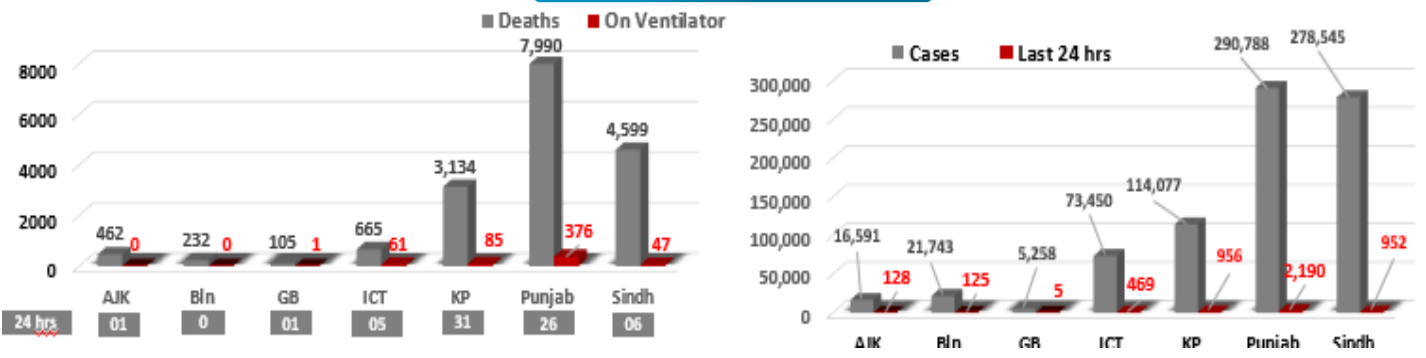
Province-Wise COVID Cases

| Provinces | Lab Tests | | Lab Confirmed Cases | | |
|------------------|--|---------------------------------|---------------------|---------------|----------------|
| | Total Tests Conducted In Last 24 Hours | Total Tests Conducted till date | Previous | Last 24 hours | Cumulative |
| AJK | 975 | 172,767 | 16,463 | 128 | 16,591 |
| Balochistan | 1,036 | 232,745 | 21,618 | 125 | 21,743 |
| Gilgit Baltistan | 333 | 108,511 | 5,253 | 05 | 5,258 |
| ICT | 3,725 | 1,453,372 | 72,981 | 469 | 73,450 |
| KP | 7,709 | 1,553,578 | 113,121 | 956 | 114,077 |
| Punjab | 19,445 | 4,501,634 | 288,598 | 2,190 | 290,788 |
| Sindh | 16,938 | 3,566,325 | 277,593 | 952 | 278,545 |
| Total | 50,161 | 11,588,932 | 795,627 | 4,825 | 800,452 |

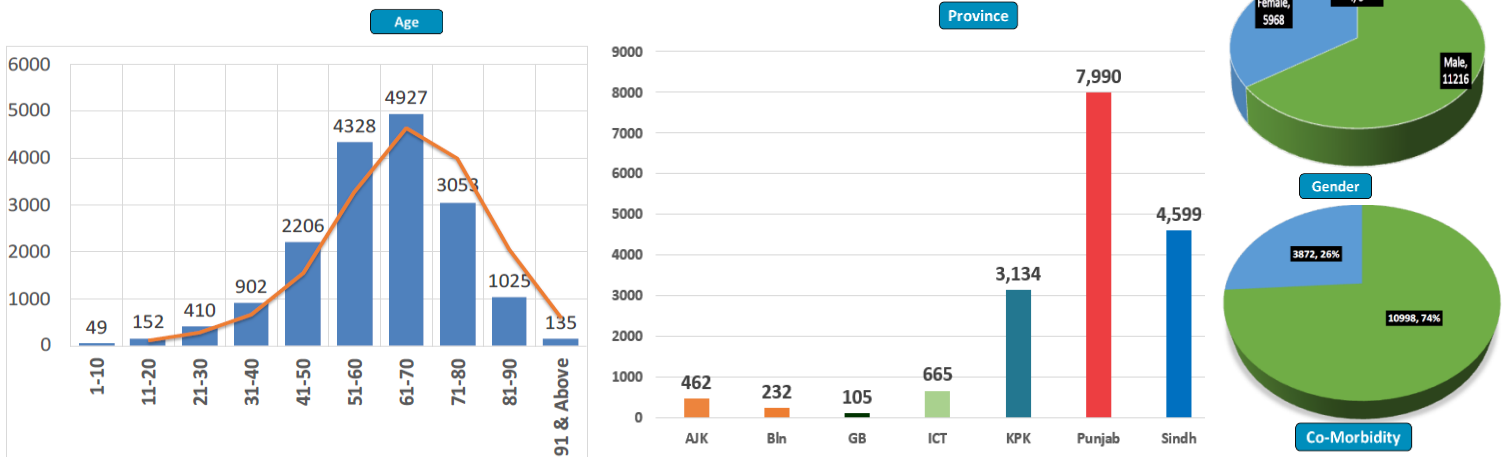
Cases Vs Recovery



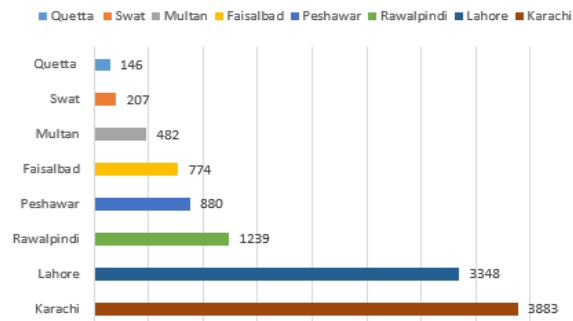
Clinical Status of COVID



Death Analysis

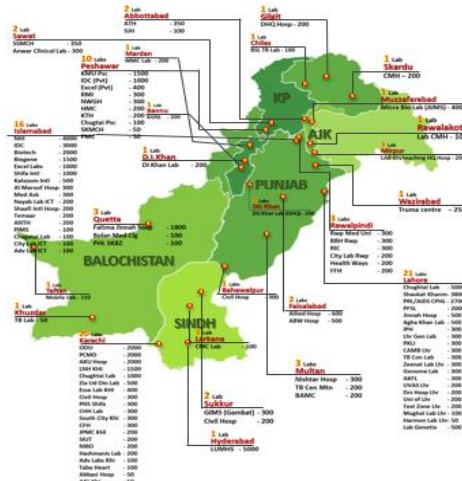
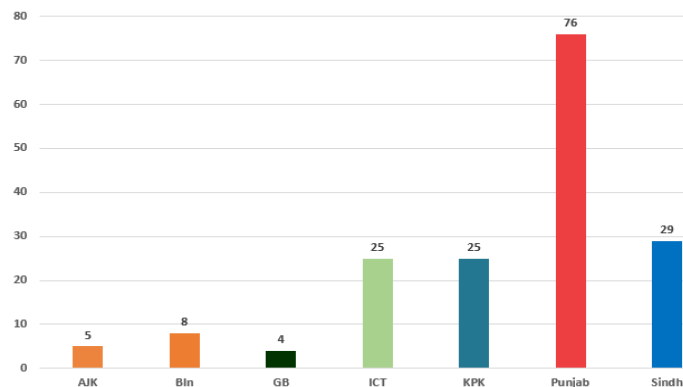


Deaths



Testing Facility

- Total Functioning Labs in Pakistan - 172
- Total Testing Capacity - 65,455
- Testing Conducted Last 24 hrs - 50,161



1. International

a. COVID Status

- (1) 147,052,788 COVID cases & 3,112,499 deaths have been reported across the globe.
- (2) India's number of COVID cases have surged by 349,691 in the past 24 hours.

b. Vaccine

- (1) The number of COVID-19 jabs administered globally has surpassed one billion mark.

c. Travel Restrictions

- (1) Italy has imposed travel ban from India over COVID variant.

d. Disease Spread

- (1) Greece has become the latest European nation to detected a case of Indian COVID-19 variant.

e. Miscellaneous

- (1) US has said it is in talks to "rapidly deploy" aid to stressed healthcare system in India and that it is gravely concerned about the situation there

2. National

a. COVID Status

- (1) National positivity ratio was recorded at 9.61%.
- (2) Pakistan has reported 4,234 COVID recoveries during last 24 hours

b. Vent Status

- (1) 570 patients are on ventilators.
- (2) **88% vents allocated for COVID patients in Gujranwala have been occupied** (88% day before yesterday)
- (3) **85% vents allocated for COVID patients in Multan have been occupied.** (85% day before yesterday)
- (4) **Vent occupancy in Lahore has been reported at 84%.** (83% day before yesterday)
- (5) **60% vents allocated for COVID patients in Mardan have been occupied.** (65% day before yesterday)
- (6) **50% vents allocated for COVID patients in ICT have been occupied.** (55% day before yesterday)

c. **Oxygen Status**

- (1) **85% beds allocated for COVID patients in Gujranwala have been occupied** (85% day before yesterday)
- (2) **80% beds allocated for COVID patients in Peshawar have been occupied** (77% day before yesterday)
- (3) **75% beds allocated for COVID patients in Swabi have been occupied** (71% day before yesterday)
- (4) **64% beds allocated for COVID patients in Nowshera have been occupied** (67% day before yesterday)
- (5) **62% beds allocated for COVID patients in Mardan have been occupied.** (68% day before yesterday)
- (6) **68% beds allocated for COVID patients in Swat have been occupied** (64% day before yesterday)
- (7) **63% beds allocated for COVID patients in Rawalpindi have been occupied** (63% day before yesterday)
- (8) **52% beds allocated for COVID patients in Gujrat have been occupied** (59% day before yesterday)
- (9) **58% beds allocated for COVID patients in ICT have been occupied** (54% day before yesterday)
- (10) **45% beds allocated for COVID patients in Lahore have been occupied** (50% day before yesterday)

d. **HCW (Health Care Workers) Status**

- (1) **29** new cases have been reported in HCWs, increasing the total to **15,776** while **15,039** have recovered (585 active cases)
- (2) Most cases in HCWs have been reported by Sindh 5,641
- (3) 152 deaths have been reported amongst HCWs. (95 doctors, 1 Medical Student, 4 nurses, 52 paramedic staff).

e. **COVID Mortality (118 x Deaths)**

- (1) 110 (93%) deaths have occurred in hospitals.
- (2) **67 deaths have been reported by Punjab.**
- (3) **28 deaths have been reported in District Lahore. Most by any district**
- (4) National CFR was reported at 2.10 %.
- (5) 67 % deceased suffered from co-morbidities.