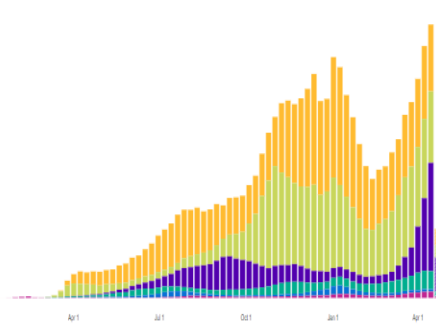
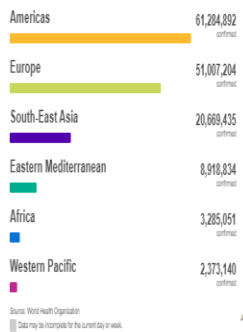
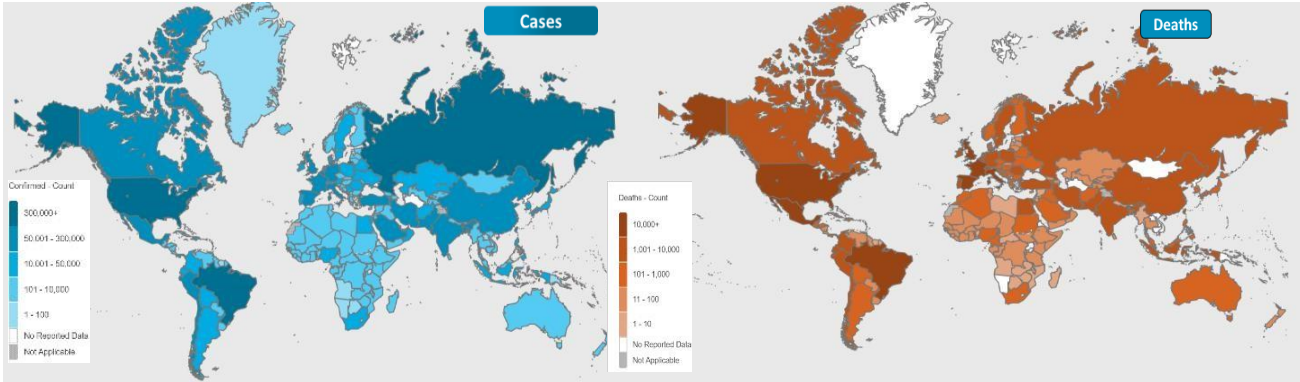




NATIONAL COMMAND AND OPERATIONS CENTRE SITUATION REPORT PART – I

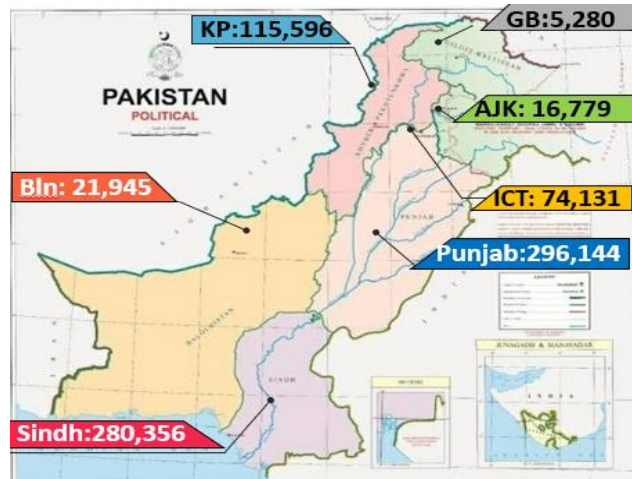
Issued: 2:00 PM
28 Apr 2021

Global Update



	Ranking	Countries	Cases	Cases Last 24 Hrs	Deaths	Deaths Last 24 Hrs	Ranking Change
Global		World	149,319,167	830,822	3,148,145	14,821	
	1	USA	32,927,091	52,046	987,384	865	↔
	3	Brazil	14,446,541	76,085	395,324	3,120	↔
	4	France	5,534,313	30,317	103,603	+333	↔
	5	Russia	4,779,425	8,053	108,980	392	↔
	6	Turkey	4,710,582	43,301	39,057	346	↔
	7	UK	4,409,631	2,685	127,451	17	↔
	8	Italy	3,981,512	10,404	119,912	373	↔
	9	Spain	3,496,134	7,665	77,855	117	↔
Regional	2	India	17,988,637	362,902	201,165	3,285	↔
	14	Iran	2,438,193	20,963	70,532	462	↔
	31	Pakistan	810,231	5,292	17,530	201	↔
	33	Bangladesh	751,659	3,031	11,228	78	↔
	105	Afghanistan	59,370	145	2,611	13	↔

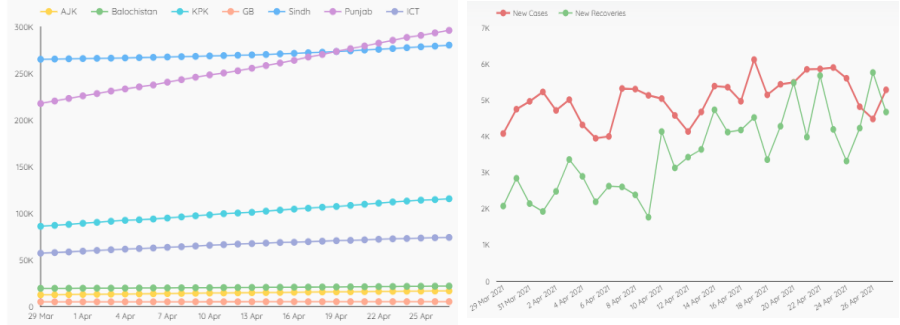
Pakistan COVID Update



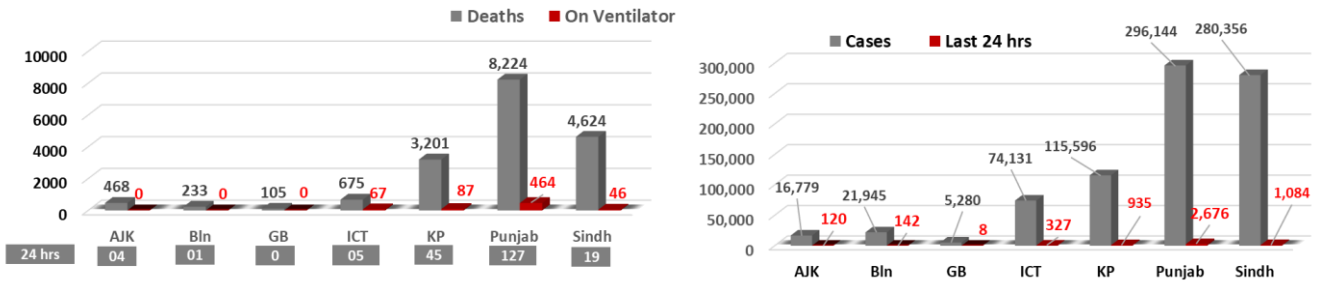
Province-Wise COVID Cases

Provinces	Lab Tests		Lab Confirmed Cases		
	Total Tests Conducted In Last 24 Hours	Total Tests Conducted till date	Previous	Last 24 hours	Cumulative
AJK	849	174,228	16,659	120	16,779
Balochistan	695	233,920	21,803	142	21,945
Gilgit Baltistan	323	109,153	5,272	08	5,280
ICT	3,812	1,461,607	73,804	327	74,131
KP	8,292	1,568,794	114,661	935	115,596
Punjab	20,665	4,541,667	289,468	2,676	296,144
Sindh	14,465	3,592,645	279,272	1,084	280,356
Total	49,101	11,682,014	804,939	5,292	810,231

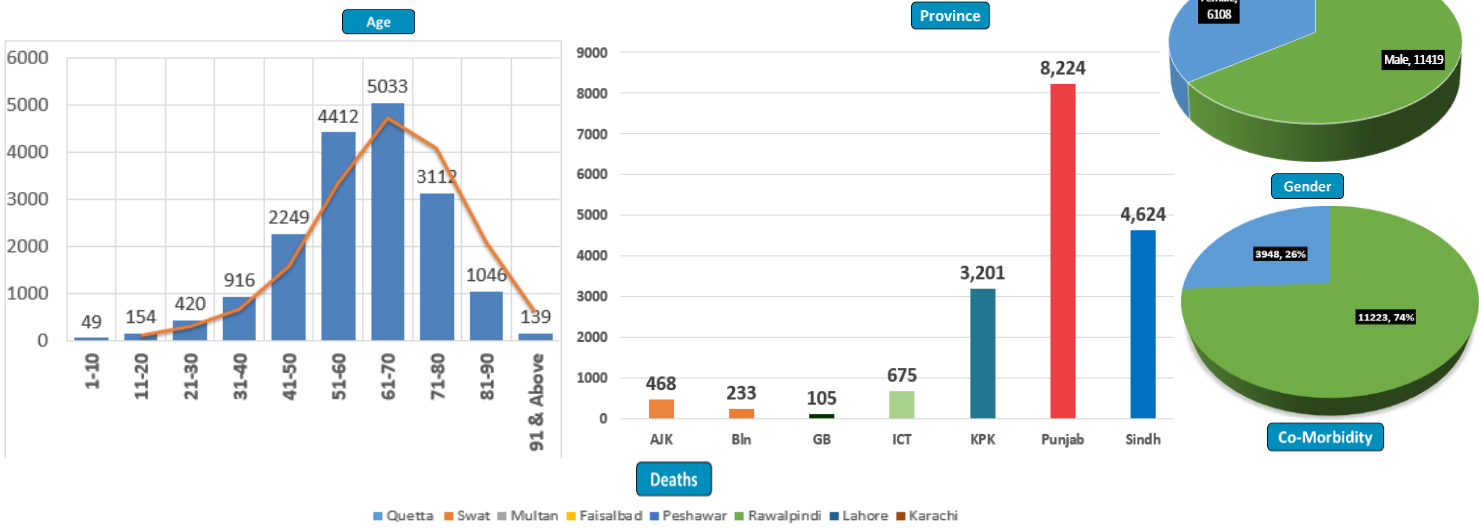
Cases Vs Recovery



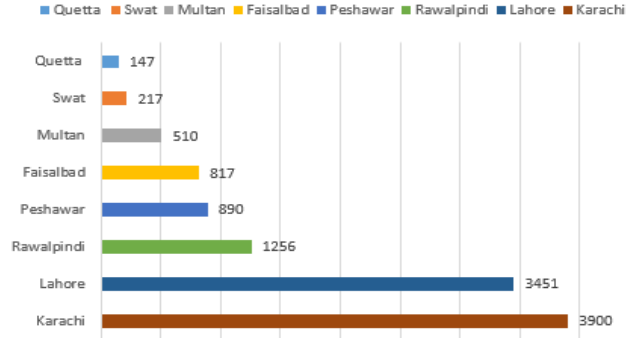
Clinical Status of COVID



Death Analysis

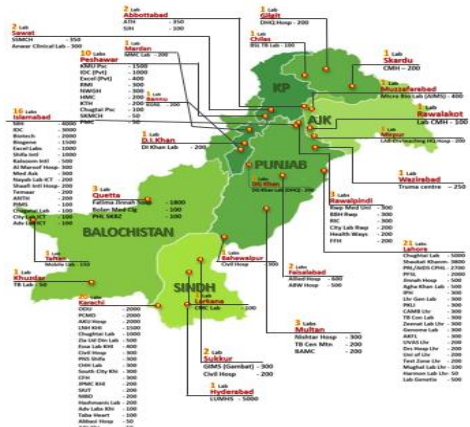
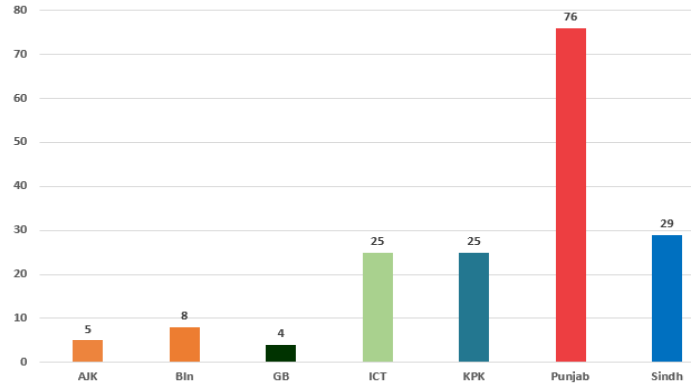


Deaths



Testing Facility

- Total Functioning Labs in Pakistan - 172
- Total Testing Capacity - 65,455
- Testing Conducted Last 24 hrs - 49,101



1. International

a. COVID Status

(1) 148,488,345 COVID cases & 3,133,324 deaths have been reported across the globe.

b. Vaccine

(1) Canada has reported first death of a patient from the AstraZeneca vaccine due to clotting.

(2) Ireland has approved the use of J&J and AstraZeneca vaccines for over-50s

c. Travel Restrictions & Lockdowns

(1) Belgium has banned travel from India, Brazil and South Africa.

(2) Spain, Philippines and Cambodia have tighten travel restrictions for arrivals from India.

d. Disease Spread

(1) WHO has said that a variant of COVID-19 contributing to surge in COVID cases in India has been found in over a dozen countries including UK, USA and Singapore.

2. National

a. COVID Status

(1) National positivity ratio was recorded at 10.77 %.

(2) Pakistan has reported 4,678 COVID recoveries during last 24 hours

b. Vent Status

(1) 599 patients are on ventilators.

(2) **81% vents allocated for COVID patients in Gujranwala have been occupied** (81% day before yesterday)

(3) **62% vents allocated for COVID patients in Multan have been occupied.** (62% day before yesterday)

(4) **Vent occupancy in Lahore has been reported at 69%.** (70% day before yesterday)

(5) **73% vents allocated for COVID patients in Mardan have been occupied.** (65% day before yesterday)

(6) **78% vents allocated for COVID patients in Peshawar have been occupied.** (55% day before yesterday)

(7) **56% vents allocated for COVID patients in ICT have been occupied.** (52% day before yesterday)

c. **Oxygen Status**

- (1) **85% beds allocated for COVID patients in Gujranwala have been occupied** (85% day before yesterday)
- (2) **89% beds allocated for COVID patients in Peshawar have been occupied** (79% day before yesterday)
- (3) **71% beds allocated for COVID patients in Swabi have been occupied** (75% day before yesterday)
- (4) **63% beds allocated for COVID patients in Nowshera have been occupied** (66% day before yesterday)
- (5) **67% beds allocated for COVID patients in Mardan have been occupied.** (62% day before yesterday)
- (6) **63% beds allocated for COVID patients in Swat have been occupied** (68% day before yesterday)
- (7) **63% beds allocated for COVID patients in Rawalpindi have been occupied** (63% day before yesterday)
- (8) **43% beds allocated for COVID patients in Gujrat have been occupied** (52% day before yesterday)
- (9) **57% beds allocated for COVID patients in ICT have been occupied** (56% day before yesterday)
- (10) **45% beds allocated for COVID patients in Lahore have been occupied** (45% day before yesterday)

d. **HCW (Health Care Workers) Status**

- (1) **6** new cases have been reported in HCWs, increasing the total to **15,827** while **15,060** have recovered (615 active cases)
- (2) Most cases in HCWs have been reported by Sindh 5,662
- (3) 152 deaths have been reported amongst HCWs. (95 doctors, 1 Medical Student, 4 nurses, 52 paramedic staff).

e. **COVID Mortality (142 x Deaths)**

- (1) 65 (93%) deaths have occurred in hospitals.
- (2) **107 deaths have been reported by Punjab.**
- (3) **54 deaths have been reported in District Lahore. Most by any district**
- (4) National CFR was reported at 3.16 %.
- (5) 75 % deceased suffered from co-morbidities.