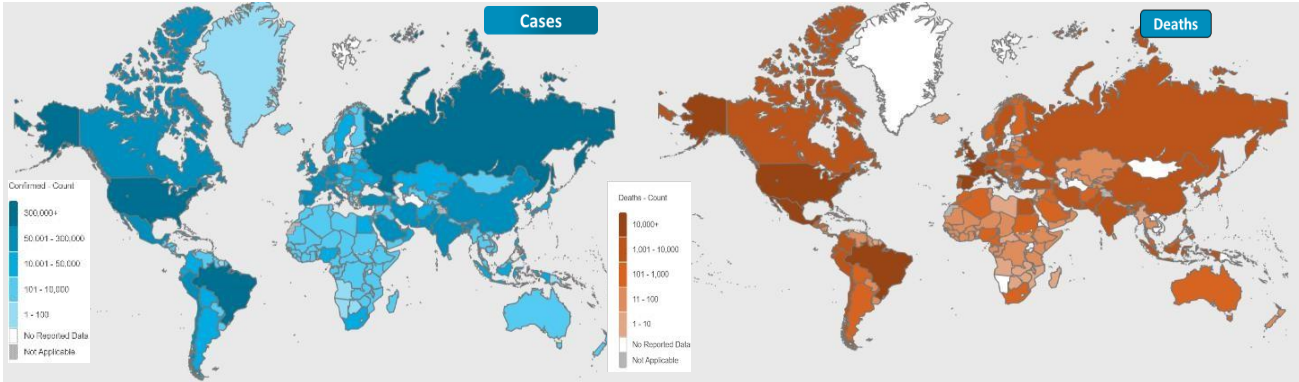




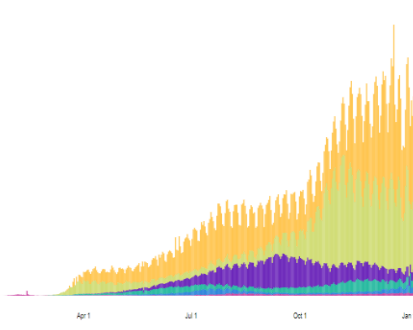
NATIONAL COMMAND AND OPERATIONS CENTRE SITUATION REPORT PART - I

Global Update

Issued: 2:00 PM
16th Jan 2021

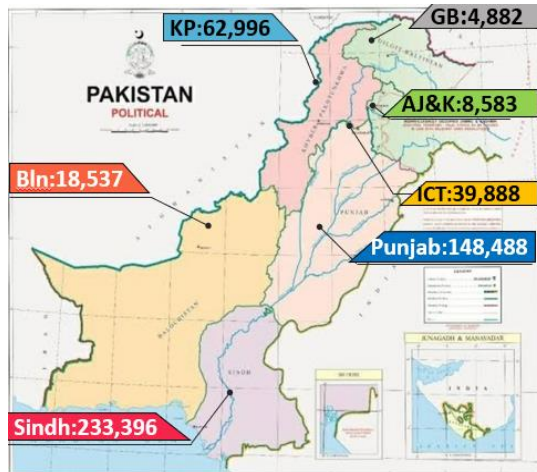


Region	Confirmed Count
Americas	40,922,526 confirmed
Europe	30,080,083 confirmed
South-East Asia	12,430,476 confirmed
Eastern Mediterranean	5,309,701 confirmed
Africa	2,265,899 confirmed
Western Pacific	1,253,191 confirmed



	Countries	Cases	Cases Last 24 Hrs	Deaths	Deaths Last 24 Hrs	Ranking	Ranking Change
Global	Overall	94,284,115	+761,446	2,016,727	+14,885		
	USA	24,102,429	+248,080	401,856	+3,805	1	↔
	Brazil	8,394,253	+68,138	208,291	+1,131	3	↔
	France	2,872,941	+21,271	69,949	+399	6	↔
	Russia	3,520,531	+24,715	64,495	+555	4	↔
	Spain	2,252,164	+40,197	53,314	+235	9	↔
Regional	UK	3,316,019	+55,761	87,295	+1,280	5	↔
	India	10,543,659	+15,151	152,130	+176	2	↔
	Iran	1,318,295	+6,485	56,621	+83	15	↔
	Bangladesh	526,485	+762	7,862	+13	29	↓
	Pakistan	516,770	2,432	10,908	+45	31	↔
Afghanistan	53,938	+107	2,336	+12	92	↓	

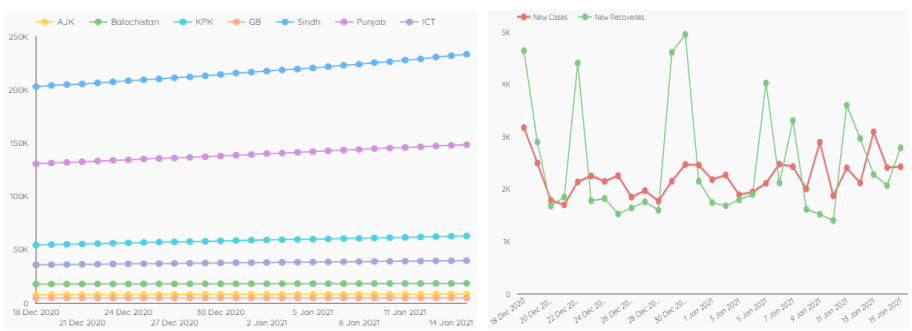
Pakistan COVID Update



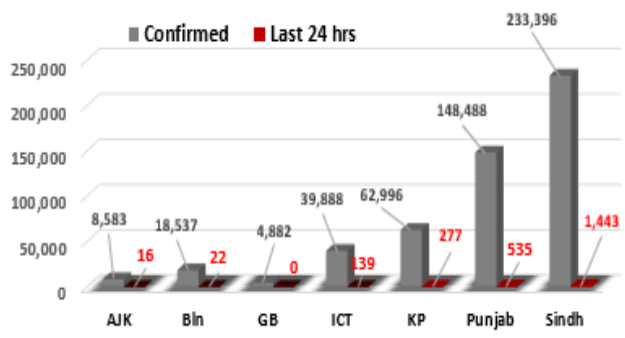
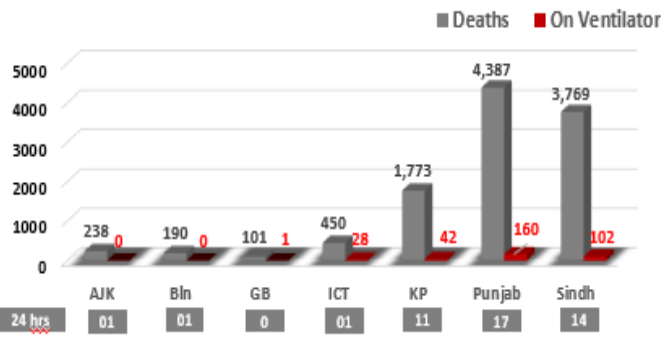
Province-Wise COVID Cases

Provinces	Lab Tests		Lab Confirmed Cases		
	Total Tests Conducted in Last 24 Hours	Total Tests Conducted till date	Previous	Last 24 hours	Cumulative
AJK	371	103,596	8,567	16	8,583
Balochistan	586	168,257	18,515	22	18,537
Gilgit Baltistan	360	71,651	4,882	00	4,882
ICT	6,784	893,885	39,749	139	39,888
KP	6,591	852,519	62,719	277	62,996
Punjab	14,390	2,684,341	147,953	535	148,488
Sindh	13,340	2,552,182	231,953	1,443	233,396
Total	42,422	7,336,491	514,338	2,432	516,770

Cases Vs Recovery

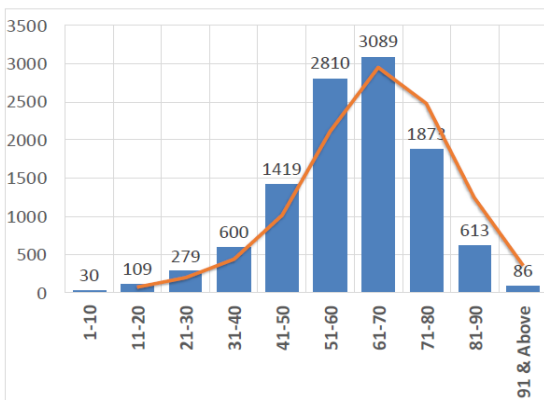


Clinical Status of COVID

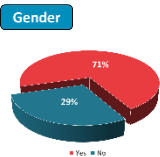
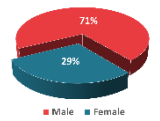
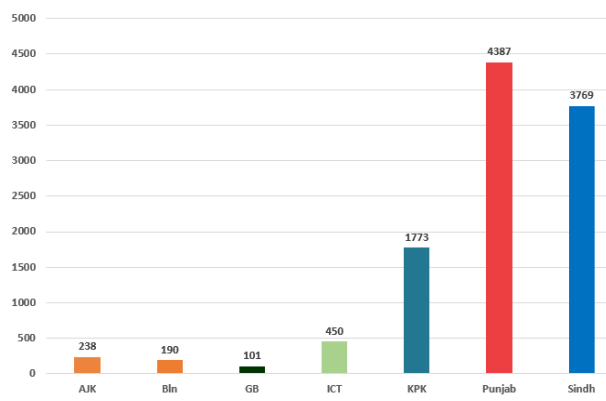


Death Analysis

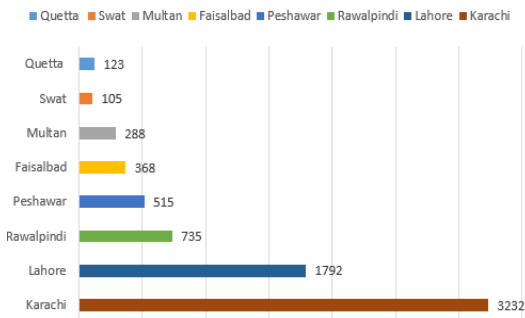
Age



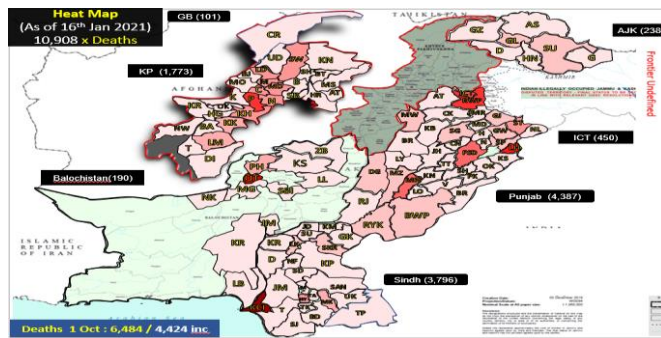
Province



Deaths

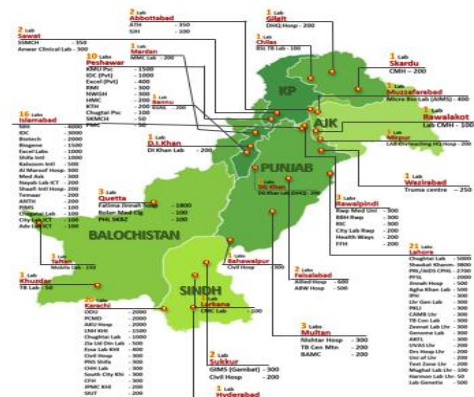
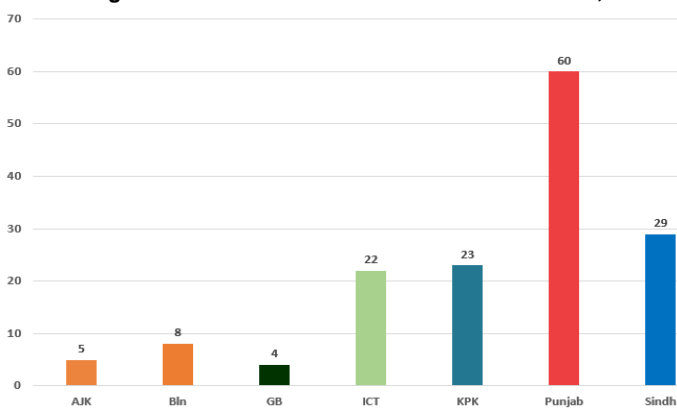


Heat Map



Testing Facility

- Total Functioning Labs in Pakistan - 151
- Total Testing Capacity - 57,531
- Testing Conducted Last 24 hrs - 42,422



1. International

a. COVID Status

- (1) 94,284,115 COVID cases & 2,016,727 deaths have been reported across the globe.
- (2) Global COVID related deaths pass 2Mn mark.
- (3) Number of coronavirus infections in Germany have crossed 2 Mn mark.

b. Vaccine

- (1) Azerbaijan has said that it will begin vaccinating its population against COVID-19 next week using Chinese Sinovac Biotech vaccine.
- (2) Nepal has approved AstraZeneca COVID vaccine for emergency use.
- (3) EU governments have said that credibility of their vaccination programmes is at risk after US pharmaceutical firm Pfizer announced a temporary slowdown of deliveries.
- (4) Paraguay has approved the use of the Russian-developed Sputnik V coronavirus vaccine.

2. National

a. COVID Status

- (1) National positivity ratio was recorded at 5.73 %.
- (2) Pakistan has reported 2,793 COVID recoveries during last 24 hours.

b. Vent Status

- (1) 322 patients are on ventilators.
- (2) **Vent occupancy in Bahawalpur has been reported at 55%. (55% day before yesterday)**
- (3) **49% vents allocated for COVID patients in Multan have been occupied. (56% day before yesterday)**
- (4) Vent occupancy in Lahore has been reported at 34%. (36% day before yesterday)
- (5) 31% vents allocated for COVID patients in ICT have been occupied. (31% day before yesterday)
- (6) 30% vents allocated for COVID patients in Peshawar have been occupied. (32% day before yesterday)

c. Oxygen Status

- (1) **48% beds allocated for COVID patients in Peshawar have been occupied (50% day before yesterday)**

- (2) 38% beds allocated for COVID patients in Multan have been occupied (33% day before yesterday)
- (3) 36% beds allocated for COVID patients in Karachi have been occupied. (37% day before yesterday)

d. **HCW (Health Care Workers) Status**

- (1) 46 new cases have been reported in HCWs, increasing the total to 13,265 while 12,525 have recovered (627 active cases)
- (2) Most cases in HCWs have been reported by Sindh 4,771.
- (3) 114 deaths have been reported amongst HCWs.

e. **COVID Mortality (45 x Deaths)**

- (1) 38 (84%) deaths have occurred in hospitals.
- (2) **22 deaths have been reported by Punjab.**
- (3) **10 deaths have been reported in District Karachi and Lahore each.**
Most by any district
- (4) National CFR was reported at 1.86 %.
- (5) 81% deceased suffered from co-morbidities.