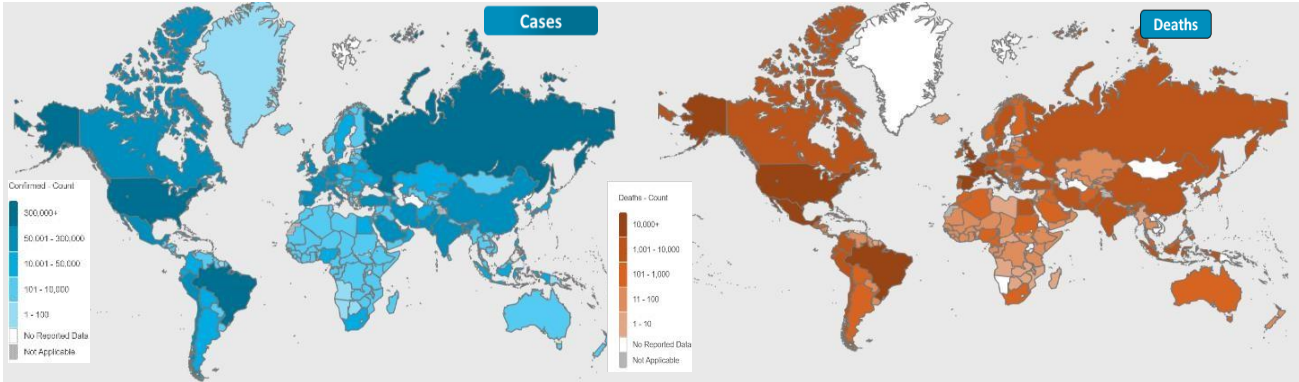




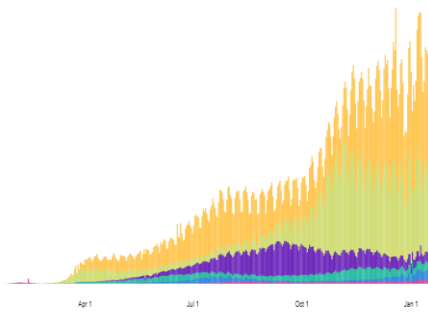
NATIONAL COMMAND AND OPERATIONS CENTRE SITUATION REPORT PART – I

Global Update

Issued: 2:00 PM
19th Jan 2021

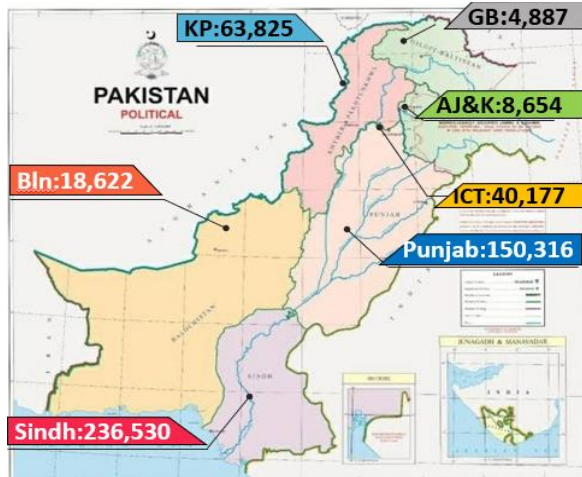


Region	Confirmed Count
Americas	41,776,035 confirmed
Europe	30,660,301 confirmed
South-East Asia	12,511,441 confirmed
Eastern Mediterranean	5,382,718 confirmed
Africa	2,335,150 confirmed
Western Pacific	1,290,493 confirmed



	Countries	Cases	Cases Last 24 Hrs	Deaths	Deaths Last 24 Hrs	Ranking	Ranking Change
Global	Overall	96,004,938	+476,353	2,048,996	+9,242		
	USA	24,626,441	+142,087	408,623	+1,425	1	↔
	Brazil	8,512,238	+24,139	210,328	+460	3	↔
	France	2,914,725	+3,736	70,686	+403	6	↔
	Russia	3,591,066	+22,857	66,037	+471	4	↔
	Spain	2,336,451	+33,800	53,769	+151	9	↔
Regional	UK	3,433,494	+37,535	89,860	+599	5	↔
	India	10,582,647	+9,975	152,593	+137	2	↔
	Iran	1,336,217	+5,806	56,886	+83	16	↔
	Bangladesh	528,329	+697	7,922	+16	30	↔
	Pakistan	523,011	+1,800	11,055	+58	31	↔
Afghanistan	54,141	+79	2,346	+3	93	↔	

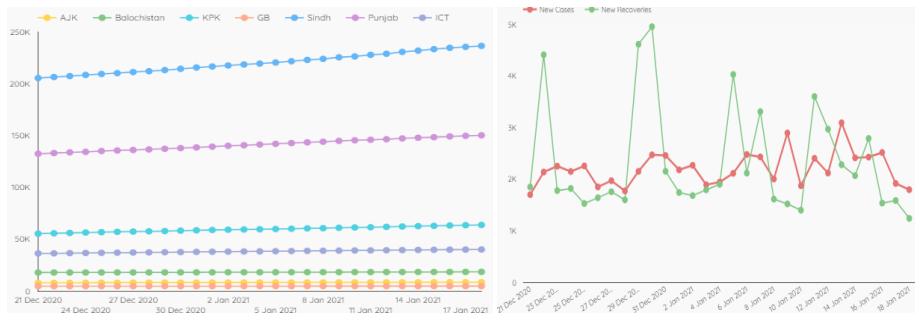
Pakistan COVID Update



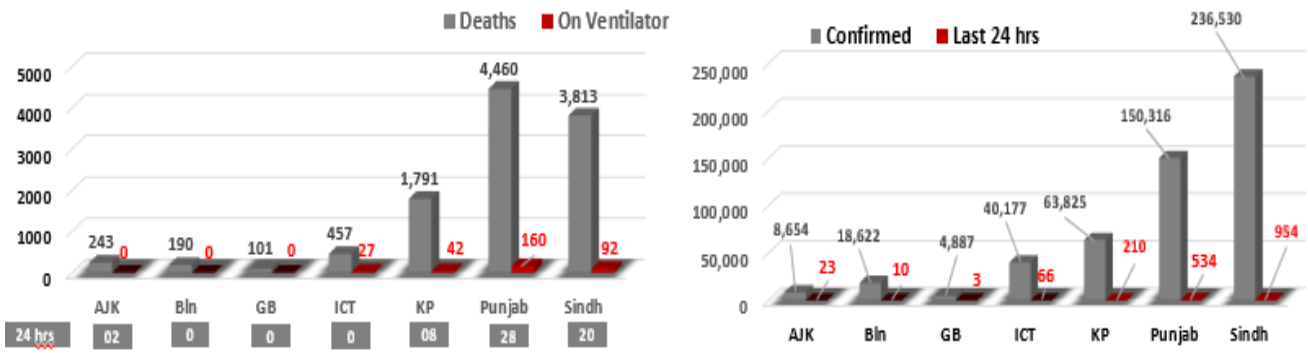
Province-Wise COVID Cases

Provinces	Lab Tests		Lab Confirmed Cases		
	Total Tests Conducted In Last 24 Hours	Total Tests Conducted till date	Previous	Last 24 hours	Cumulative
AJK	252	104,479	8,631	23	8,654
Balochistan	259	169,747	18,612	10	18,622
Gilgit Baltistan	350	72,749	4,884	03	4,887
ICT	5,826	909,666	40,111	66	40,177
KP	6,075	870,907	63,615	210	63,825
Punjab	13,151	2,726,873	149,782	534	150,316
Sindh	10,600	2,587,663	235,576	954	236,530
Total	36,513	7,442,084	521,211	1,800	523,011

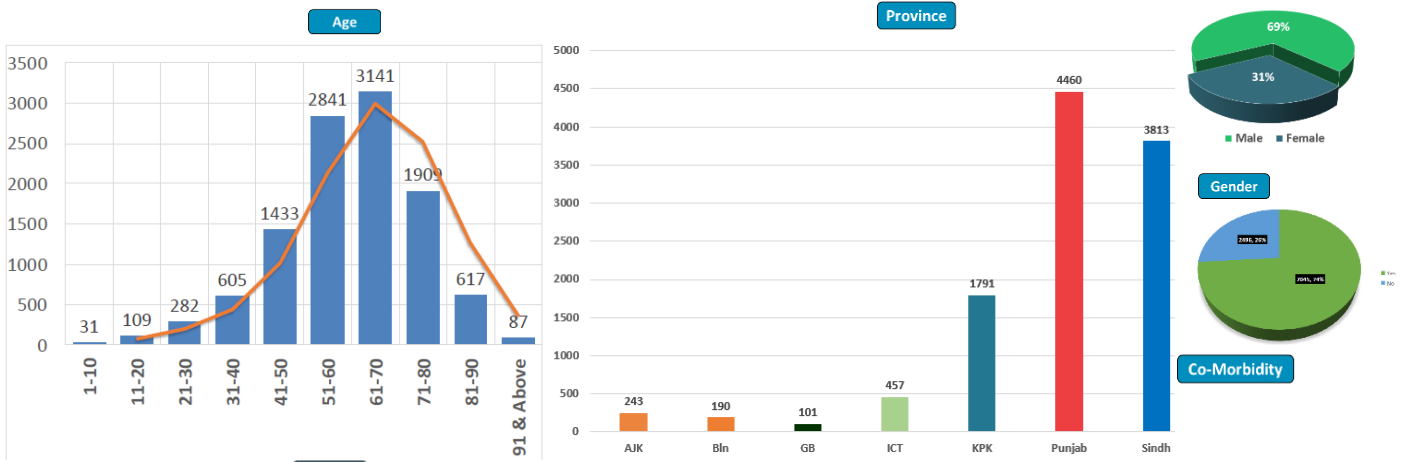
Cases Vs Recovery



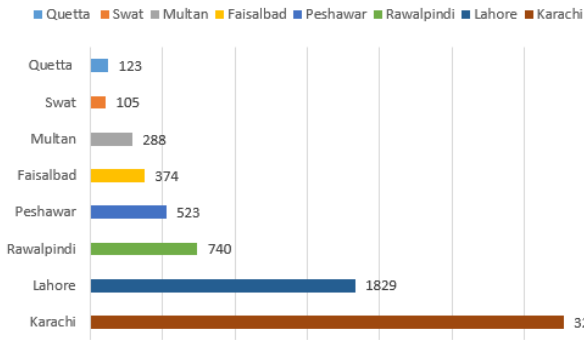
Clinical Status of COVID



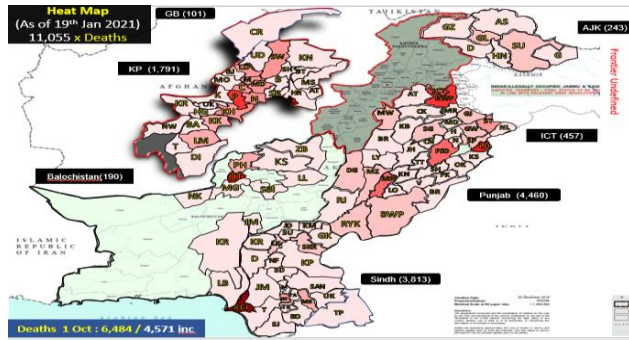
Death Analysis



Deaths

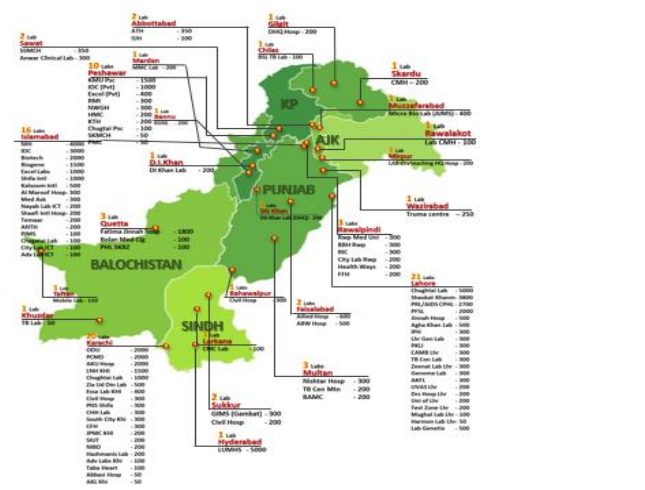
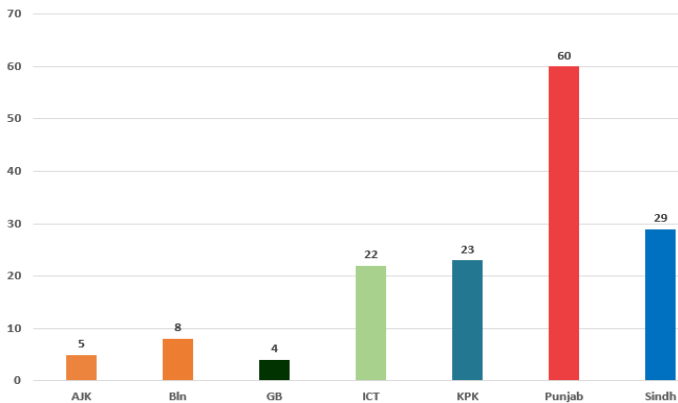


Heat Map



Testing Facility

- Total Functioning Labs in Pakistan - 151
- Total Testing Capacity - 57,931
- Testing Conducted Last 24 hrs - 36,513



1. International

a. COVID Status

- (1) 95,994,967 COVID cases & 2,048,631 deaths have been reported across the globe.
- (2) China reports seventh day with over 100 daily cases.

b. Vaccine

- (1) Indian Health Ministry has reported 447 cases of vaccine side effects as 224,301 people received first dose of vaccines.
- (2) Sinovac has said that its COVID-19 vaccine is more effective with longer dosing interval.

c. Research

- (1) Scientists have claimed that see new evidence that South African variant binds more readily to human cells
- (2) Research carried out in England has claimed that almost 30% of COVID patients in England readmitted to hospital after discharge.

2. National

a. COVID Status

- (1) National positivity ratio was recorded at 4.92 %.
- (2) Pakistan has reported 1,243 COVID recoveries during last 24 hours.

b. Vent Status

- (1) 325 patients are on ventilators.
- (2) **Vent occupancy in Bahawalpur has been reported at 55%. (55% day before yesterday)**
- (3) **49% vents allocated for COVID patients in Multan have been occupied. (49% day before yesterday)**
- (4) Vent occupancy in Lahore has been reported at 36%. (35% day before yesterday)
- (5) 35% vents allocated for COVID patients in ICT have been occupied. (35% day before yesterday)
- (6) 31% vents allocated for COVID patients in Peshawar have been occupied. (31% day before yesterday)

c. Oxygen Status

- (1) **44% beds allocated for COVID patients in Peshawar have been occupied (45% day before yesterday)**

- (2) **40% beds allocated for COVID patients in Karachi have been occupied. (39% day before yesterday)**
- (3) 38% beds allocated for COVID patients in Multan have been occupied (38% day before yesterday)

d. **HCW (Health Care Workers) Status**

- (1) 31 new cases have been reported in HCWs, increasing the total to 13,374 while 12,628 have recovered (632 active cases)
- (2) Most cases in HCWs have been reported by Sindh 4,863
- (3) 114 deaths have been reported amongst HCWs.

e. **COVID Mortality (46 x Deaths)**

- (1) 39 (93%) deaths have occurred in hospitals.
- (2) **23 deaths have been reported by Punjab.**
- (3) **17 deaths have been reported in District Karachi. Most by any district**
- (4) National CFR was reported at 2.39 %.
- (5) 87 % deceased suffered from co-morbidities.