



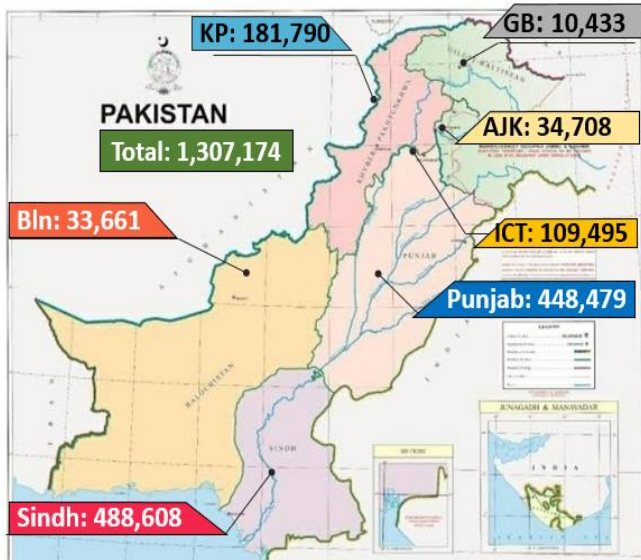
NCOC SITREP PART-I

Issued at: 1400 Hrs
11 Jan 2022

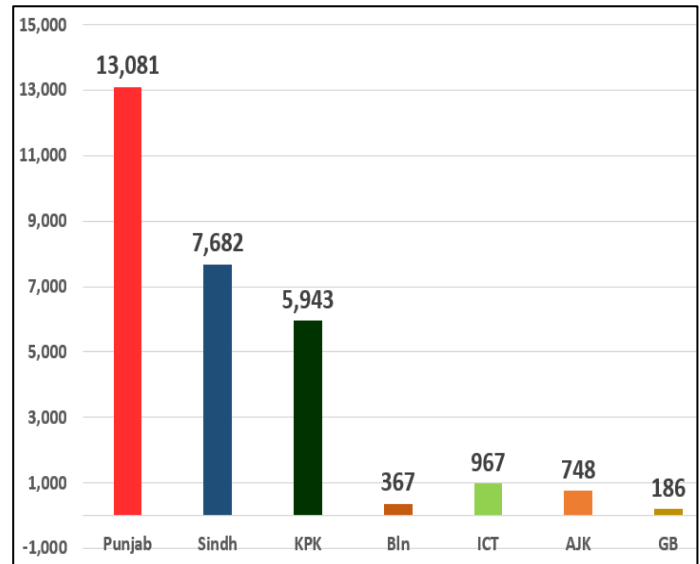
Global and Regional Update

Region	Ranking	Countries	Cases	Last 24 Hrs Cases	Deaths	Last 24 Hrs Deaths	Change in Ranking
Global	World		310,970,754	2,141,968	5,512,288	5,097	
	1	USA	62,661,272	673,837	861,336	1,002	↔
	3	Brazil	22,558,695	34,788	620,142	111	↔
	4	UK	14,617,314	142,224	150,230	77	↔
	5	France	12,205,114	93,896	125,718	280	↔
	6	Russia	10,666,679	15,830	316,904	741	↔
	7	Turkey	10,043,688	65,236	83,843	141	↔
	8	Germany	7,570,248	38,618	114,887	175	↔
	9	Italy	7,538,701	101,762	139,265	227	↔
	10	Spain	7,457,300	97,464	90,136	68	↔
Regional	2	India	35,875,790	167,348	484,213	277	↔
	11	Iran	6,208,337	1,932	131,915	37	↔
	33	Bangladesh	1,595,931	2,231	28,105	3	↔
	40	Pakistan	1,307,174	1,467	28,974	2	↔
	105	Afghanistan	158,394	13	7,373		↔

Pakistan Cumulative Covid Update



Province-Wise Deaths Morbidity

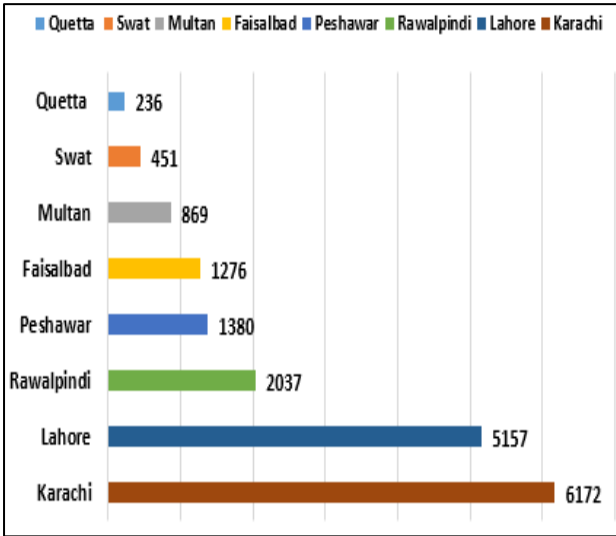


Province-Wise Update

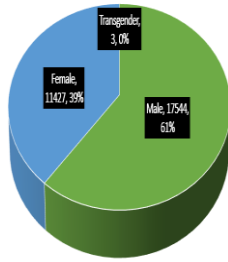
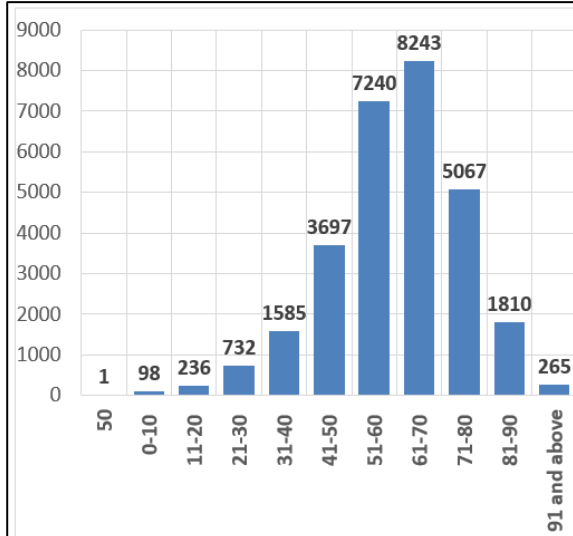
Provinces	Lab Conducted Tests		Lab Confirmed Cases		
	Last 24 Hours Test	Total Test Till To Day	Previous	Last 24 Hours	Cumulative
Punjab	18,224	9,103,061	448,091	388	448,479
Sindh	13,757	7,348,976	487,668	940	488,608
KP	7,237	3,937,638	181,757	33	181,790
Bln	361	499,170	33,659	2	33,661
ICT	3,564	2,442,891	109,396	99	109,495
AJK	232	335,152	34,704	4	34,708
GB	165	224,224	10,432	1	10,433
Total	43,540	23,891,112	1,305,707	1,467	1,307,174

Death Analysis

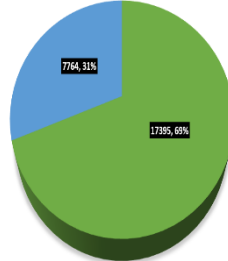
City-Wise



Age-Wise

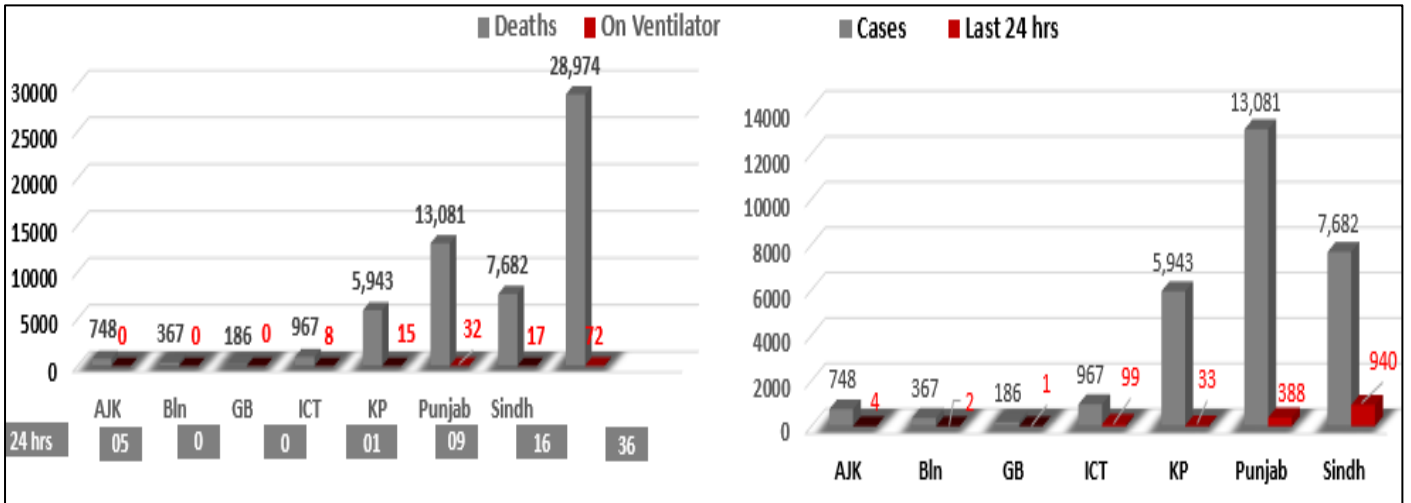


Gender



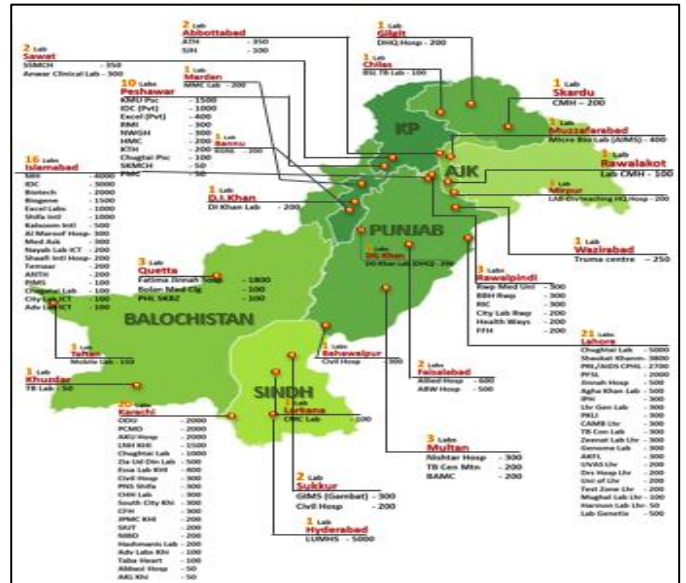
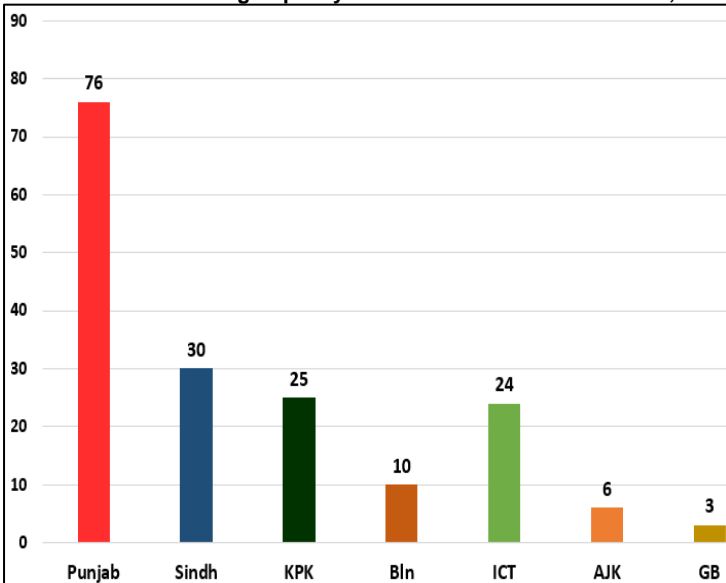
Co-Morbidity

Clinical Status of COVID



Testing Facility

- Total Functioning Labs in Pakistan - 174
- Total Testing Capacity - 81,813



1. **International**

- a. **COVID Status** 311,099,080 COVID cases & 5,512,468 deaths have been reported across the globe.

2. **National**a. **COVID Status**

- (1) National positivity ratio was recorded at **3.33%**.
 (2) Pakistan has reported **266** COVID recoveries during last 24 hours.

b. **Ventilator Occupancy**

- (1) **72** patients are on ventilators.
 (2) Patients on Ventilator in different cities.

City	Today (11-1-22)	Yesterday (10-1-22)
Peshawar	12%	14%
ICT	11%	10%
Sargodha	10%	13%
Lahore	7%	8%
Swabi	6%	6%

c. **Oxygen Beds Occupancy**

City	Today (11-1-22)	Yesterday (10-1-22)
ICT	13%	12%
Gujrat	11%	5%
Faisalabad	8%	7%
Lahore	8%	9%
Peshawar	7%	8%

d. **HCW (Health Care Workers) Status**

- (1) **3** new cases have been reported in HCWs, increasing in the total **18,120** while **17,770** have recovered. (**170** active cases)
 (2) Most cases in HCWs have been reported by Sindh **6,063**.
 (3) **173** deaths have been reported amongst HCWs.

e. **COVID Mortality (2 x Deaths)**

- (1) **1 (50%)** death have occurred in hospitals.
 (2) **1** death have been reported by **Pb**.
 (3) National CFR was reported at **2.22%**