



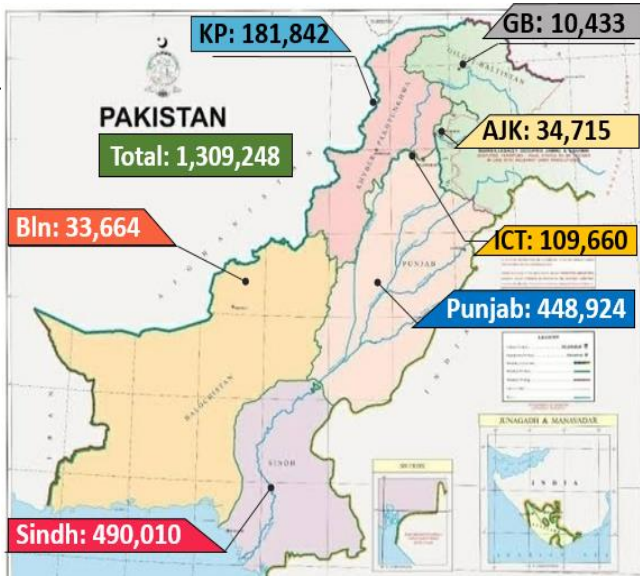
NCOC SITREP PART-I

Issued at: 1400 Hrs
12 Jan 2022

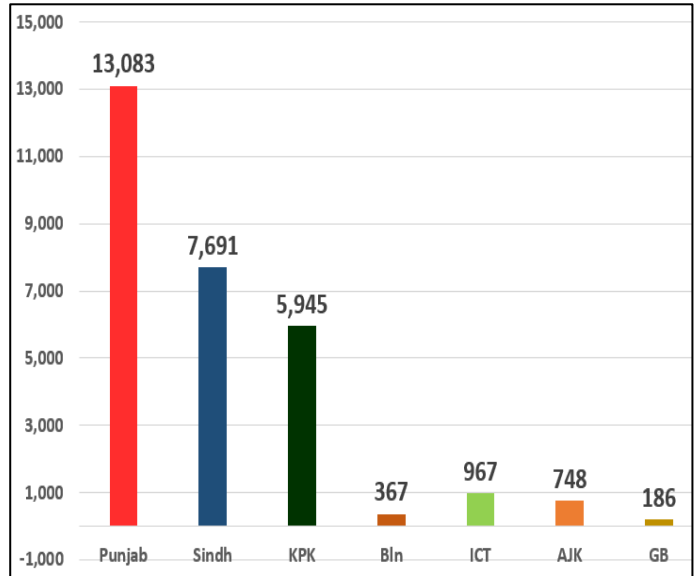
Global and Regional Update

Region	Ranking	Countries	Cases	Last 24 Hrs Cases	Deaths	Last 24 Hrs Deaths	Change in Ranking
Global	World		313,982,386	2,809,570	5,521,136	8,232	
	1	USA	63,390,876	672,872	863,896	2,173	↔
	3	Brazil	22,630,142	71,447	620,281	139	↔
	4	UK	14,732,594	120,821	150,609	379	↔
	5	France	12,573,263	368,149	126,059	341	↔
	6	Russia	10,684,204	17,525	317,687	783	↔
	7	Turkey	10,117,954	74,266	83,980	137	↔
	8	Italy	7,774,863	220,532	139,559	294	↑
	9	Germany	7,631,453	61,205	115,274	387	↓
	10	Spain	7,592,242	134,942	90,383	247	↔
Regional	2	India	36,070,510	194,720	484,655	442	↔
	12	Iran	6,210,298	1,961	131,940	25	↓
	33	Bangladesh	1,598,389	2,458	28,107	2	↔
	40	Pakistan	1,309,248	2,074	28,987	13	↔
	105	Afghanistan	158,471	53	7,374	1	↔

Pakistan Cumulative Covid Update



Province-Wise Deaths Morbidity

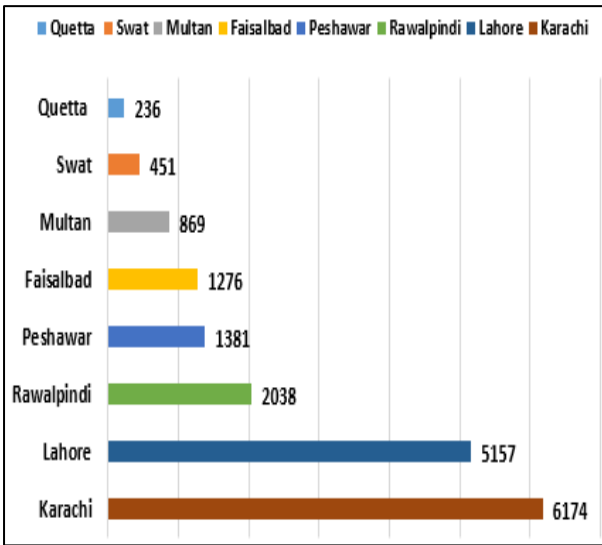


Province-Wise Update

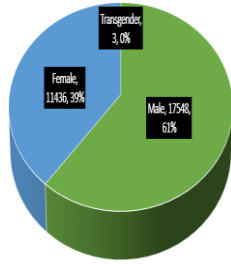
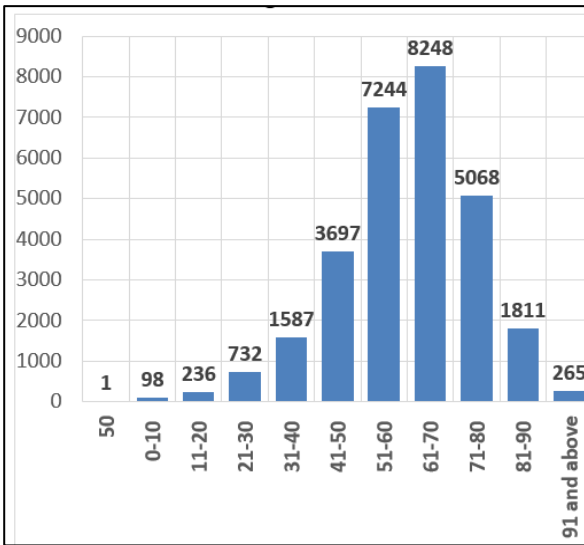
Provinces	Lab Conducted Tests		Lab Confirmed Cases		
	Last 24 Hours Test	Total Test Till To Day	Previous	Last 24 Hours	Cumulative
Punjab	18,966	9,122,027	448,479	445	448,924
Sindh	12,514	7,361,490	488,608	1402	490,010
KP	8,062	3,945,700	181,790	52	181,842
Bln	284	499,454	33,661	3	33,664
ICT	3,616	2,446,507	109,495	165	109,660
AJK	459	335,611	34,708	7	34,715
GB	219	224,443	10,433	0	10,433
Total	44,120	23,935,232	1,307,174	2,074	1,309,248

Death Analysis

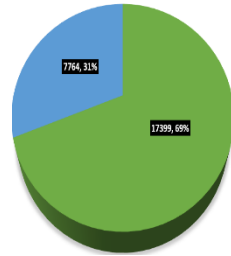
City-Wise



Age-Wise

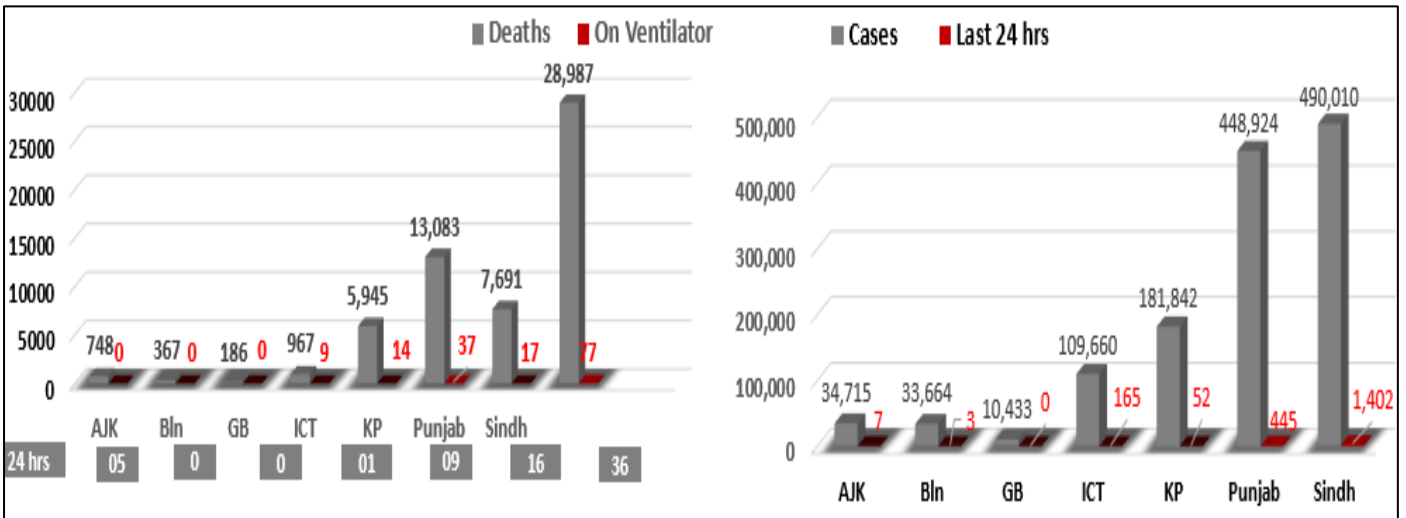


Gender



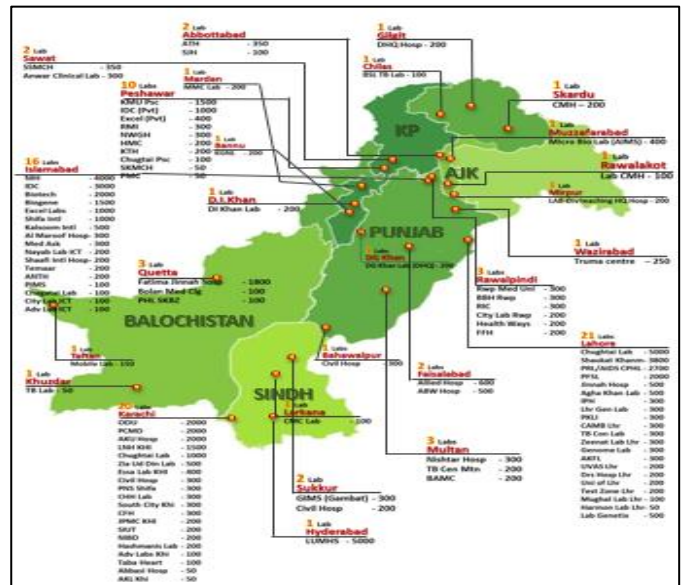
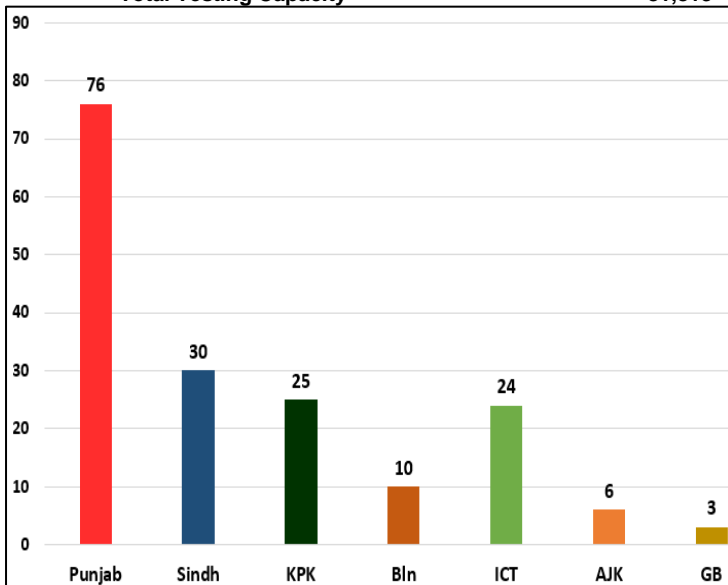
Co-Morbidity

Clinical Status of COVID



Testing Facility

- Total Functioning Labs in Pakistan - 174
- Total Testing Capacity - 81,813



1. **International**

- a. **COVID Status.** 314,130,520 COVID cases & 5,521,429 deaths have been reported across the globe.

2. **National**a. **COVID Status**

- (1) National positivity ratio was recorded at **4.70%**.
 (2) Pakistan has reported **446** COVID recoveries during last 24 hours.

b. **Ventilator Occupancy**

- (1) **77** patients are on ventilators.
 (2) Patients on Ventilator in different cities.

City	Today (12-1-22)	Yesterday (11-1-22)
ICT	12%	11%
Peshawar	11%	12%
Sargodha	10%	10%
Lahore	9%	7%
Swabi	6%	6%

c. **Oxygen Beds Occupancy**

City	Today (12-1-22)	Yesterday (11-1-22)
ICT	13%	13%
Lahore	10%	8%
Gujrat	8%	11%
Faisalabad	7%	8%
Peshawar	7%	7%

d. **HCW (Health Care Workers) Status**

- (1) **6** new cases have been reported in HCWs, increasing in the total **18,126** while **17,770** have recovered. (**176** active cases)
 (2) Most cases in HCWs have been reported by Sindh **6,065**.
 (3) **173** deaths have been reported amongst HCWs.

e. **COVID Mortality (13 x Deaths)**

- (1) **13 (100%)** death have occurred in hospitals.
 (2) **9** deaths have been reported by **Sindh**.
 (3) National CFR was reported at **2.21%**