



# NCOC SITREP PART-I

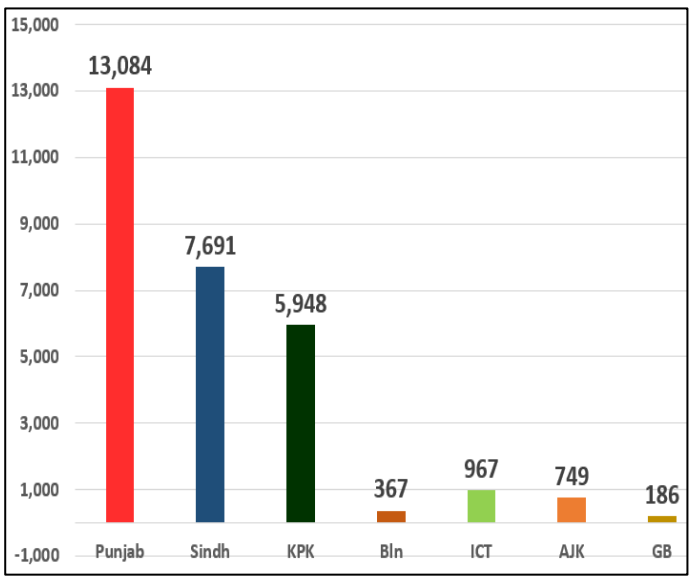
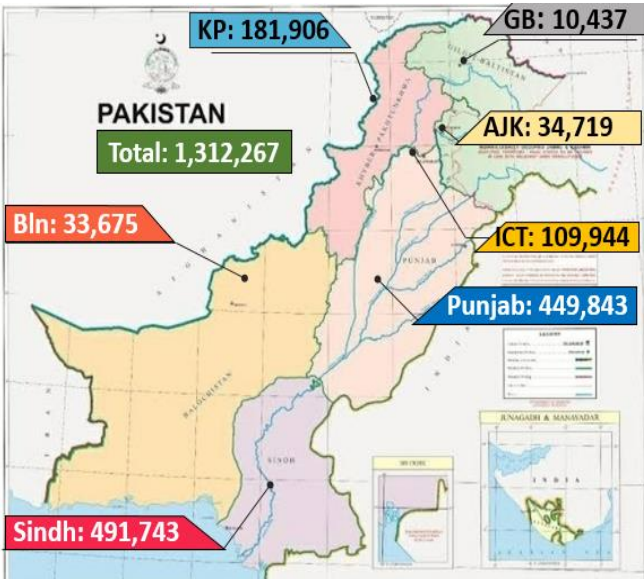
Issued at: 1400 Hrs  
13 Jan 2022

Global and Regional Update

Region	Ranking	Countries	Cases	Last 24 Hrs Cases	Deaths	Last 24 Hrs Deaths	Change in Ranking
Global	World		317,328,061	3,151,357	5,530,289	8,327	
	1	USA	64,344,694	814,494	866,882	2,269	↔
	3	Brazil	22,718,606	88,464	620,419	138	↔
	4	UK	14,862,138	129,587	151,007	398	↔
	5	France	12,934,982	361,719	126,305	246	↔
	6	Russia	10,702,150	17,946	318,432	745	↔
	7	Turkey	10,195,676	77,722	84,125	145	↔
	8	Italy	7,971,068	196,224	139,872	313	↔
	9	Spain	7,771,367	179,125	90,508	125	↑
	10	Germany	7,711,995	80,542	115,605	331	↓
Regional	2	India	36,317,927	247,417	485,035	380	↔
	12	Iran	6,212,387	2,089	131,972	32	↔
	34	Bangladesh	1,601,305	2,916	28,111	4	↓
	40	Pakistan	1,312,267	3,019	28,992	5	↔
	105	Afghanistan	158,511	40	7,376	2	↔

Pakistan Cumulative Covid Update

Province-Wise Deaths Morbidity

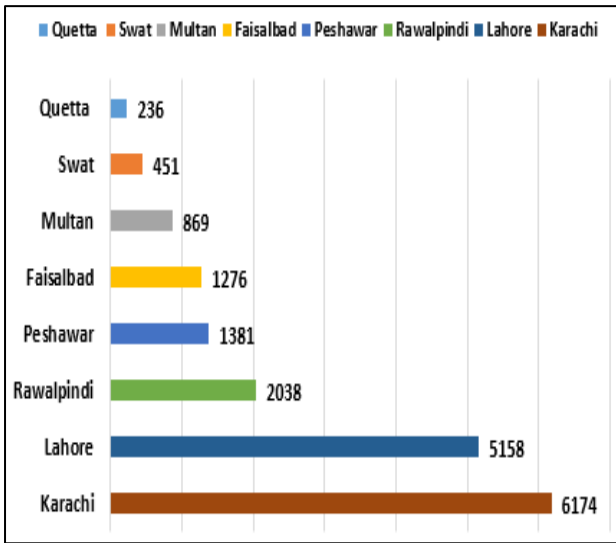


Province-Wise Update

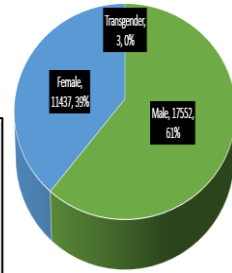
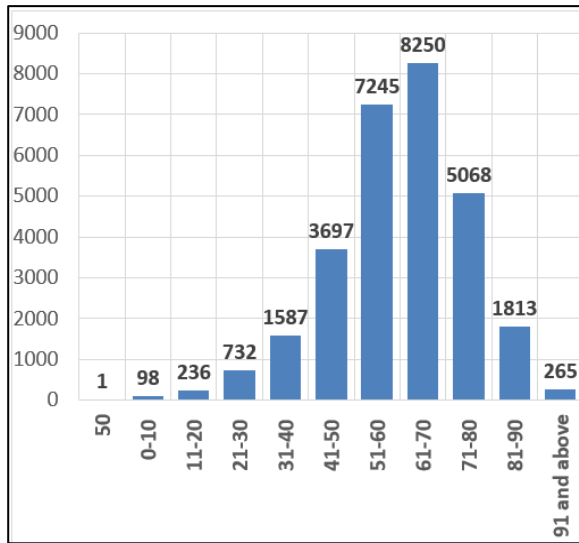
Provinces	Lab Conducted Tests		Lab Confirmed Cases		
	Last 24 Hours Test	Total Test Till To Day	Previous	Last 24 Hours	Cumulative
Punjab	19,580	9,141,607	448,924	919	449,843
Sindh	13,678	7,375,168	490,010	1733	491,743
KP	10,160	3,955,860	181,842	64	181,906
Bln	542	499,996	33,664	11	33,675
ICT	4,509	2,451,016	109,660	284	109,944
AJK	551	336,162	34,715	4	34,719
GB	250	224,693	10,433	4	10,437
<b>Total</b>	<b>49,270</b>	<b>23,984,502</b>	<b>1,309,248</b>	<b>3,019</b>	<b>1,312,267</b>

Death Analysis

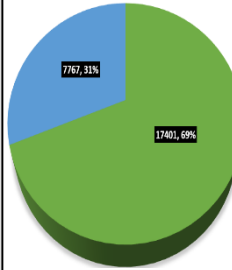
City-Wise



Age-Wise

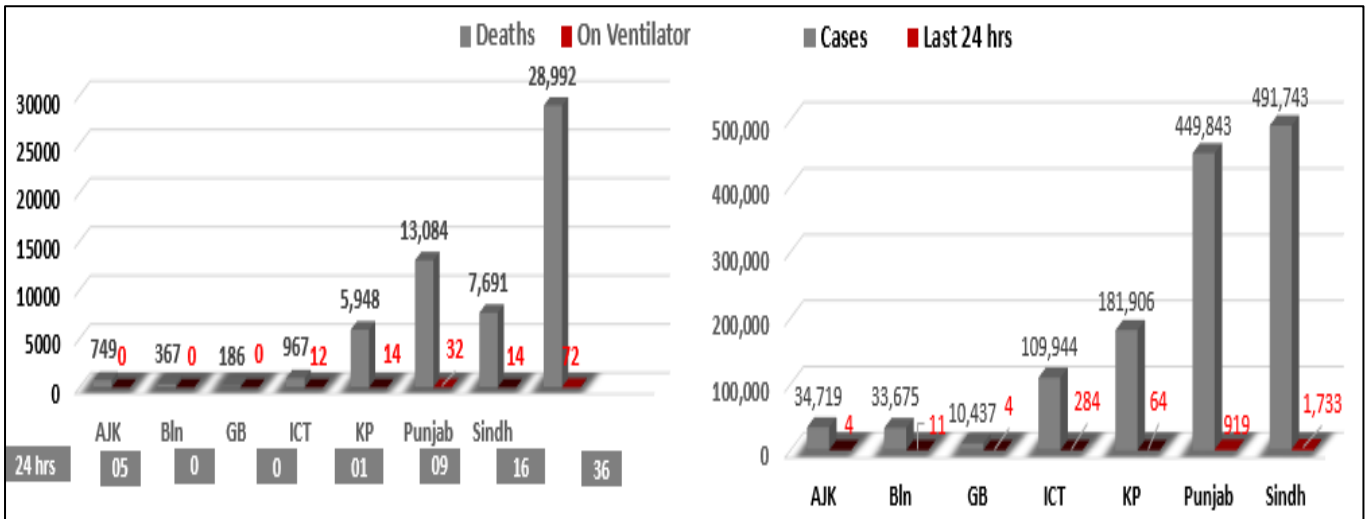


Gender



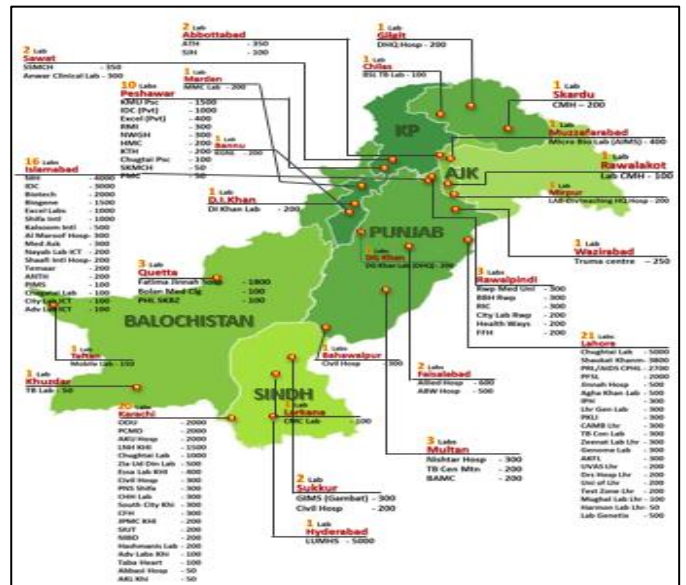
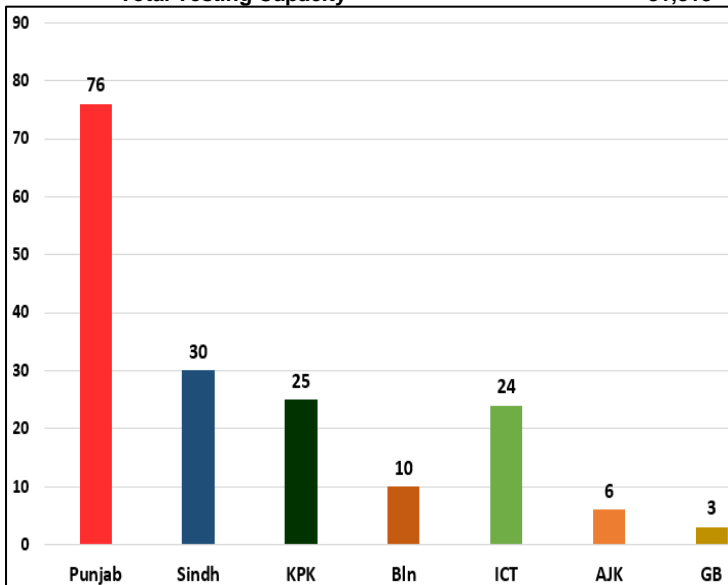
Co-Morbidity

Clinical Status of COVID



Testing Facility

- Total Functioning Labs in Pakistan - 174
- Total Testing Capacity - 81,813



1. **International**

- a. **COVID Status** 317,627,277 COVID cases & 5,531,118 deaths have been reported across the globe.

2. **National**a. **COVID Status**

- (1) National positivity ratio was recorded at **6.12%**.  
 (2) Pakistan has reported **346** COVID recoveries during last 24 hours.

b. **Ventilator Occupancy**

- (1) **72** patients are on ventilators.  
 (2) Patients on Ventilator in different cities.

City	Today (13-1-22)	Yesterday (12-1-22)
ICT	16%	12%
Peshawar	12%	11%
Lahore	8%	9%
Sargodha	7%	10%
Multan	4%	6%

c. **Oxygen Beds Occupancy**

City	Today (13-1-22)	Yesterday (12-1-22)
ICT	13%	13%
Lahore	11%	10%
Sargodha	9%	6%
Karachi	8%	7%
Gujrat	7%	8%

d. **HCW (Health Care Workers) Status**

- (1) **16** new cases have been reported in HCWs, increasing in the total **18,142** while **17,775** have recovered. (**187** active cases)  
 (2) Most cases in HCWs have been reported by Sindh **6,067**.  
 (3) **173** deaths have been reported amongst HCWs.

e. **COVID Mortality (05 x Deaths)**

- (1) **05 (100%)** death have occurred in hospitals.  
 (2) **3** deaths have been reported by **KP**.  
 (3) National CFR was reported at **2.21%**