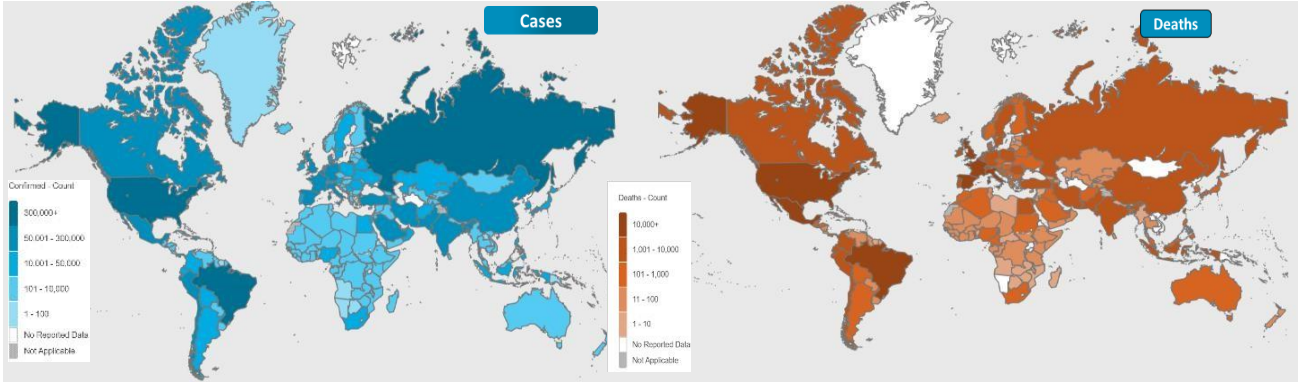




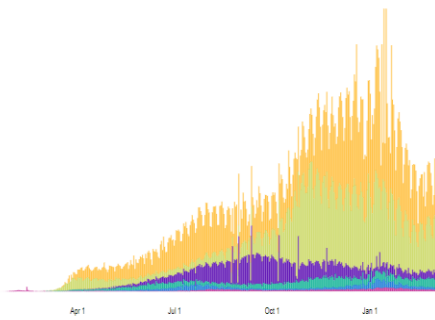
NATIONAL COMMAND AND OPERATIONS CENTRE SITUATION REPORT PART - I

Issued: 2:00 PM
10 Mar 2021

Global Update

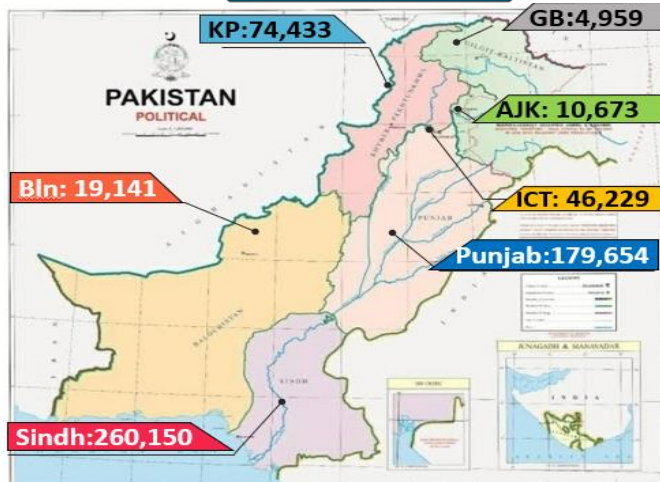


| | |
|-----------------------|----------------------|
| Americas | 51,847,469 confirmed |
| Europe | 40,026,167 confirmed |
| South-East Asia | 13,733,828 confirmed |
| Eastern Mediterranean | 6,682,075 confirmed |
| Africa | 2,909,543 confirmed |
| Western Pacific | 1,675,085 confirmed |



| | Ranking | Countries | Cases | Cases Last 24 Hrs | Deaths | Deaths Last 24 Hrs | Ranking Change |
|----------|-------------|------------|-------------|-------------------|-----------|--------------------|----------------|
| Global | | World | 118,146,650 | 388,611 | 2,621,162 | 8,970 | |
| | 1 | USA | 29,801,506 | 55,683 | 540,574 | 1,704 | ↔ |
| | 3 | Brazil | 11,125,017 | 69,537 | 268,568 | 1,954 | ↔ |
| | 4 | Russia | 4,342,474 | 9,445 | 89,809 | 336 | ↔ |
| | 5 | UK | 4,228,998 | 5,766 | 124,797 | 231 | ↔ |
| | 6 | France | 3,932,862 | 23,302 | 89,301 | 316 | ↔ |
| | 7 | Spain | 3,164,983 | 4,013 | 71,727 | 291 | ↔ |
| Regional | 2 | India | 11,261,470 | 16,846 | 158,079 | 113 | ↔ |
| | 15 | Iran | 1,706,559 | 8,554 | 60,867 | 81 | ↔ |
| | 31 | Pakistan | 595,239 | 1,786 | 13,324 | 43 | ↔ |
| | 33 | Bangladesh | 552,087 | 912 | 8,489 | 13 | ↔ |
| 102 | Afghanistan | 55,894 | 26 | 2,451 | | ↔ | |

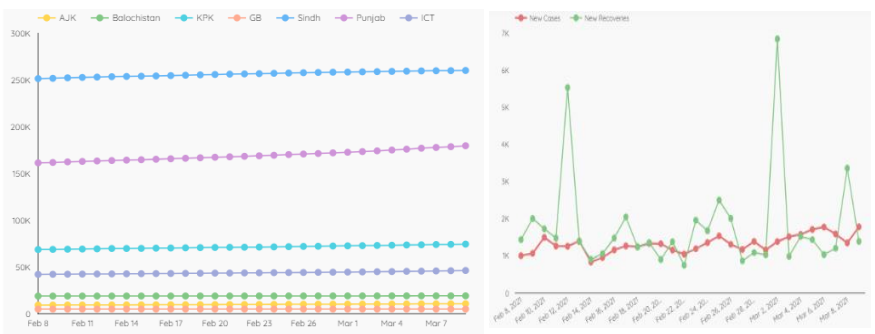
Pakistan COVID Update



Province-Wise COVID Cases

| Provinces | Lab Tests | | Lab Confirmed Cases | | |
|------------------|--|---------------------------------|---------------------|---------------|----------------|
| | Total Tests Conducted In Last 24 Hours | Total Tests Conducted till date | Previous | Last 24 hours | Cumulative |
| AJK | 630 | 129,578 | 10,626 | 47 | 10,673 |
| Balochistan | 520 | 195,546 | 19,121 | 20 | 19,141 |
| Gilgit Baltistan | 264 | 91,031 | 4,959 | 00 | 4,959 |
| ICT | 9,240 | 1,164,686 | 45,976 | 253 | 46,229 |
| KP | 6,012 | 1,192,724 | 74,167 | 266 | 74,433 |
| Punjab | 15,260 | 3,447,815 | 178,648 | 1,006 | 179,654 |
| Sindh | 7,499 | 3,096,658 | 259,956 | 194 | 260,150 |
| Total | 39,425 | 9,318,038 | 593,453 | 1,786 | 595,239 |

Cases Vs Recovery



1. International

a. COVID Status

- (1) 118,146,596 COVID cases & 2,621,162 deaths have been reported across the globe.
- (2) Italy has recorded 100,000 coronavirus deaths.

b. COVID Vaccine

- (1) Indonesia has approved AstraZeneca's COVID-19 vaccine for emergency use.

c. Lockdown & Restrictions

- (1) Spain has extended its ban on arrivals from Britain, Brazil and South Africa until the end of March

d. Miscellaneous

- (1) Saudi Arabia has allowed shops and markets to give discounts to vaccinated people.

2. National

a. COVID Status

- (1) National positivity ratio was recorded at 4.53 %.
- (2) Pakistan has reported 1,393 COVID recoveries during last 24 hours

b. Vent Status

- (1) 233 patients are on ventilators.
- (2) Vent occupancy in Lahore has been reported at 40%. (36% day before yesterday)
- (3) 32% vents allocated for COVID patients in ICT have been occupied. (30% day before yesterday)
- (4) 22% vents allocated for COVID patients in Peshawar have been occupied. (20% day before yesterday)

c. Oxygen Status

- (1) **94% beds allocated for COVID patients in Gujrat have been occupied.** (94% day before yesterday)
- (2) 38% beds allocated for COVID patients in Peshawar have been occupied (38% day before yesterday)
- (3) 32% beds allocated for COVID patients in ICT have been occupied (27% day before yesterday)
- (4) 29% beds allocated for COVID patients in Multan have been occupied (29% day before yesterday)

- (5) 27% beds allocated for COVID patients in Lahore have been occupied (28% day before yesterday)

d. **HCW (Health Care Workers) Status**

- (1) 5 new cases have been reported in HCWs, increasing the total to **14,495** while **13,887** have recovered (469 active cases)
- (2) Most cases in HCWs have been reported by Sindh **5,457**
- (3) 139 deaths have been reported amongst HCWs. (88 doctors, Medical Student, 3 nurses, 47 paramedic staff)

e. **COVID Mortality (54 x Deaths)**

- (1) 22 (100%) deaths have occurred in hospitals.
- (2) **35 deaths have been reported by Punjab.**
- (3) **22 deaths have been reported in District Lahore. Most by any district**
- (4) National CFR was reported at 3.99 %.
- (5) 64 % deceased suffered from co-morbidities.