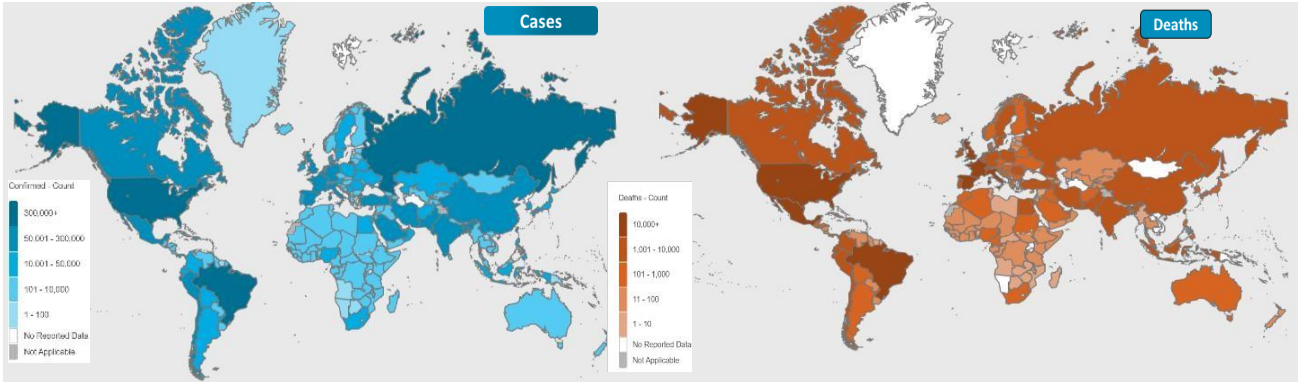




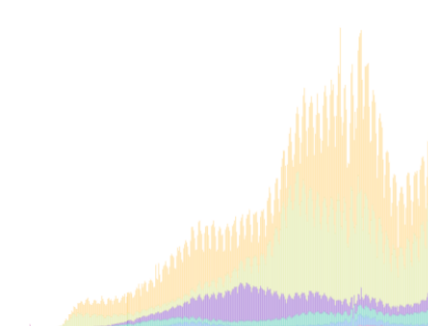
NATIONAL COMMAND AND OPERATIONS CENTRE SITUATION REPORT PART – I

Issued: 2:00 PM
25 Mar 2021

Global Update

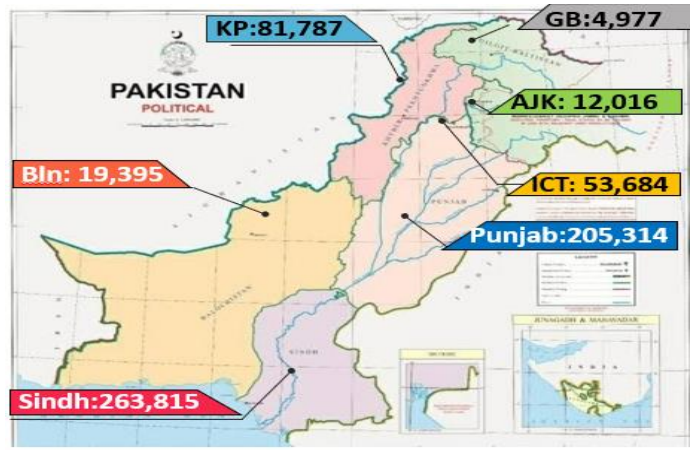


Americas	54,394,716 confirmed
Europe	43,099,204 confirmed
South-East Asia	14,344,181 confirmed
Eastern Mediterranean	7,235,154 confirmed
Africa	3,020,998 confirmed
Western Pacific	1,807,245 confirmed



	Ranking	Countries	Cases	Cases Last 24 Hrs	Deaths	Deaths Last 24 Hrs	Ranking Change
Global		World	125,415,963	583,803	2,756,185	3,956	
	1	USA	30,704,292	66,538	558,422	1,405	↔
	2	Brazil	12,227,179	90,564	301,087	2,244	↔
	4	Russia	4,483,471	8,361	96,219	401	↔
	6	UK	4,312,908	5,605	126,382	98	↔
	5	France	4,378,446	33,389	93,180	272	↔
	8	Spain	3,241,345	7,026	74,064	320	↔
	3	India	11,787,013	53,419	160,726	249	↔
Regional	15	Iran	1,823,317	7,605	62,045	94	↔
	31	Pakistan	640,988	3,946	14,028	63	↔
	34	Bangladesh	580,808	3,567	8,763	25	↔
	102	Afghanistan	56,226	34	2,467	1	↔

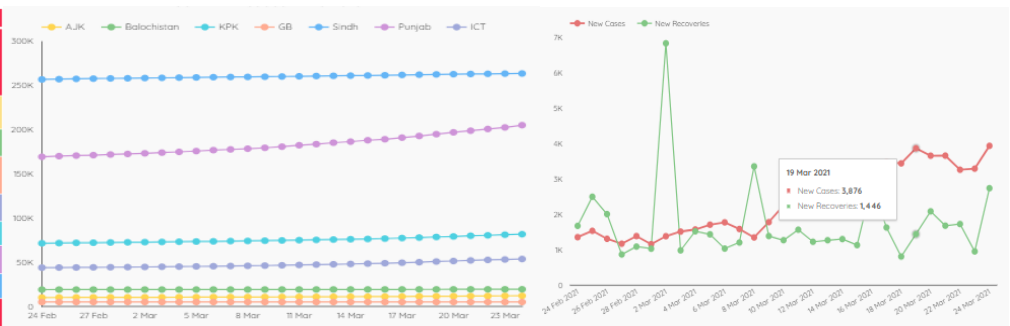
Pakistan COVID Update



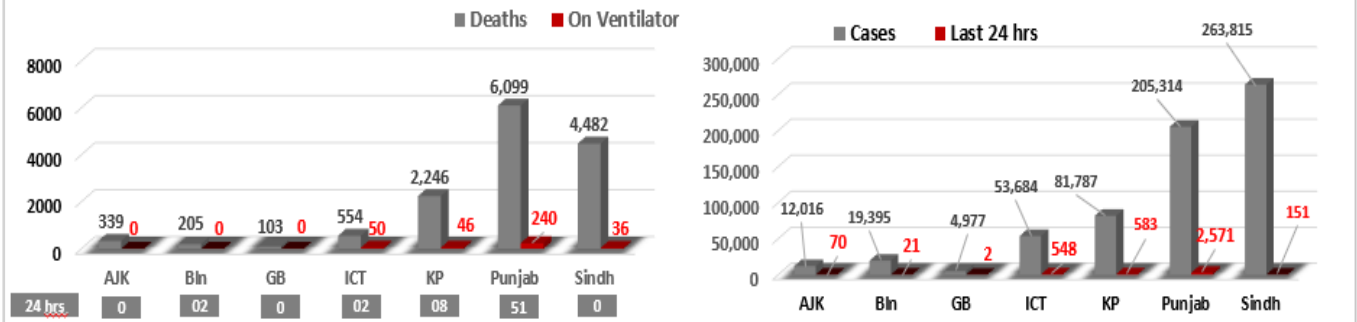
Province-Wise COVID Cases

Provinces	Lab Tests		Lab Confirmed Cases		
	Total Tests Conducted In Last 24 Hours	Total Tests Conducted till date	Previous	Last 24 hours	Cumulative
AJK	827	142,283	11,946	70	12,016
Balochistan	529	202,673	19,374	21	19,395
Gilgit Baltistan	312	95,879	4,975	02	4,977
ICT	5,382	1,257,494	53,136	548	53,684
KP	6,675	1,300,583	81,204	583	81,787
Punjab	17,153	3,701,917	202,743	2,571	205,314
Sindh	8,000	3,233,544	263,664	151	263,815
Total	38,858	9,934,373	637,042	3,946	640,988

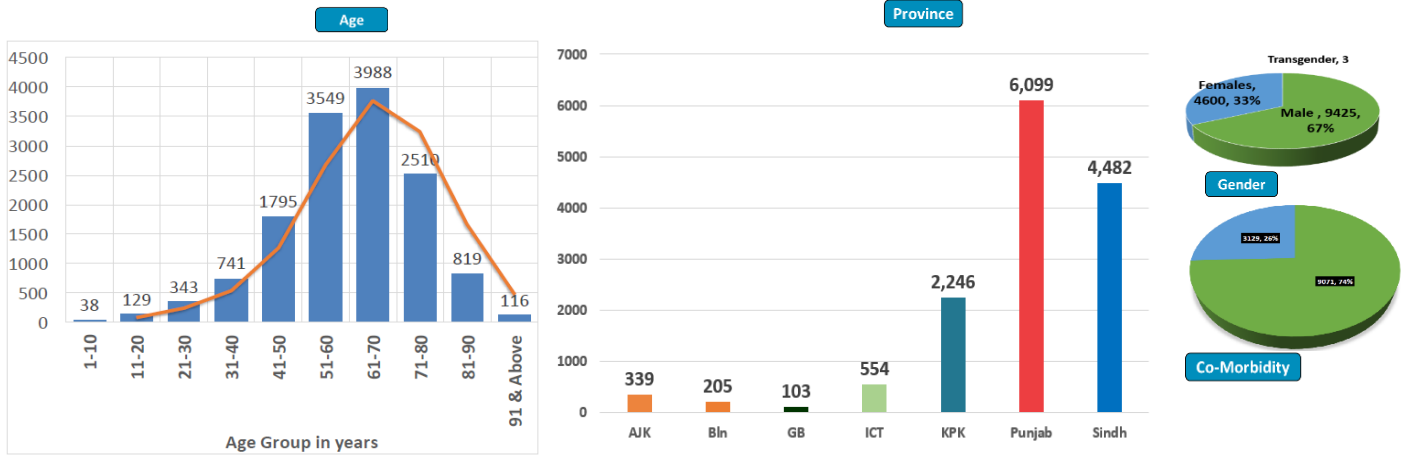
Cases Vs Recovery



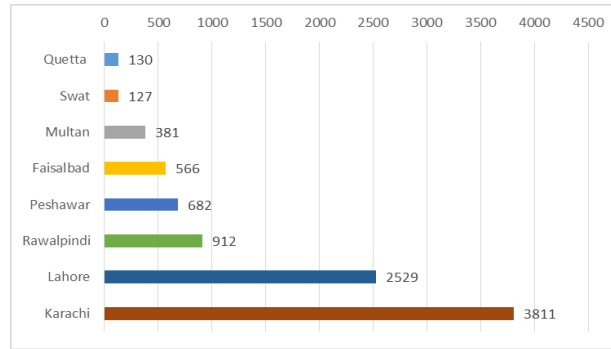
Clinical Status of COVID



Death Analysis

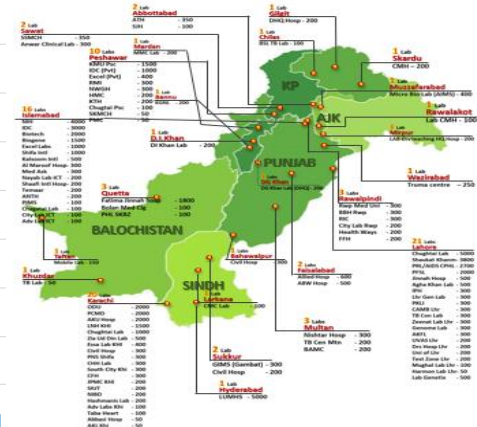
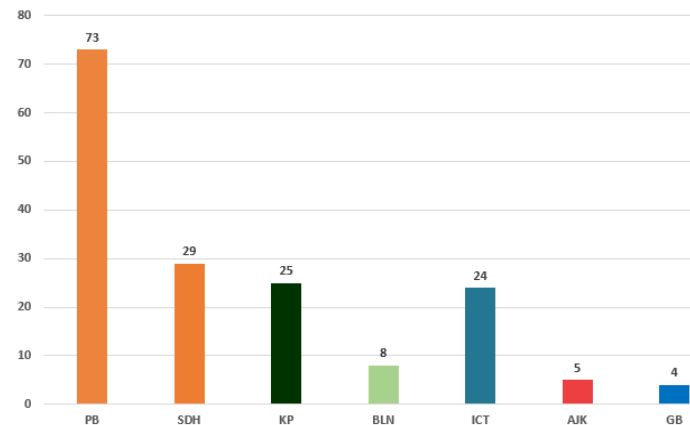


Deaths



Testing Facility

- Total Functioning Labs in Pakistan - 168
- Total Testing Capacity - 61,377
- Testing Conducted Last 24 hrs - 38,858



1. International

a. COVID Status

- (1) 125,423,670 COVID cases & 2,756,165 deaths have been reported across the globe.
- (2) India reported 275 new COVID-19 deaths, most this year
- (3) Turkey has registered its highest daily number of 29,762 new infections this year

b. COVID Vaccine

- (1) India has temporarily suspended exports of the AstraZeneca COVID-19 vaccine to meet domestic demand as cases rise.
- (2) Spain has restarted its AstraZeneca vaccination drive after a week-long suspension.

c. Miscellaneous

- (1) Bill Gates says world should be back to normal by end of 2022 due to vaccines.

2. National

a. COVID Status

- (1) National positivity ratio was recorded at 10.15 %.
- (2) Pakistan has reported 2,747 COVID recoveries during last 24 hours

b. Vent Status

- (1) 364 patients are on ventilators.
- (2) **57% vents allocated for COVID patients in ICT have been occupied.** (57% day before yesterday)
- (3) **52% vents allocated for COVID patients in Multan have been occupied.** (52% day before yesterday)
- (4) **Vent occupancy in Lahore has been reported at 50%.** (52% day before yesterday)
- (5) Vent occupancy in Peshawar has been reported at 35%. (32% day before yesterday)

c. Oxygen Status

- (1) **96% beds allocated for COVID patients in Gujrat have been occupied.** (86% day before yesterday)
- (2) **68% beds allocated for COVID patients in Peshawar have been occupied** (62% day before yesterday)

- (3) **47 beds allocated for COVID patients in ICT have been occupied**
(51% day before yesterday)
- (4) 37% beds allocated for COVID patients in Rawalpindi have been occupied (37% day before yesterday)
- (5) 34% beds allocated for COVID patients in Faisalabad have been occupied (34% day before yesterday)
- (6) 33% beds allocated for COVID patients in Lahore have been occupied (33% day before yesterday)
- (7) 33% beds allocated for COVID patients in Multan have been occupied (33% day before yesterday)

d. **HCW (Health Care Workers) Status**

- (1) **14** new cases have been reported in HCWs, increasing the total to **14,698** while **14,011** have recovered (543 active cases)
- (2) Most cases in HCWs have been reported by Sindh **5,502**
- (3) 144 deaths have been reported amongst HCWs. (92 doctors, 1 Medical Student, 3 nurses, 48 paramedic staff)

e. **COVID Mortality (30 x Deaths)**

- (1) 29 (97%) deaths have occurred in hospitals.
- (2) **13 deaths have been reported by KP.**
- (3) **06 deaths have been reported in District Lahore. Most by any district**
- (4) National CFR was reported at 0.90 %.
- (5) 64 % deceased suffered from co-morbidities.