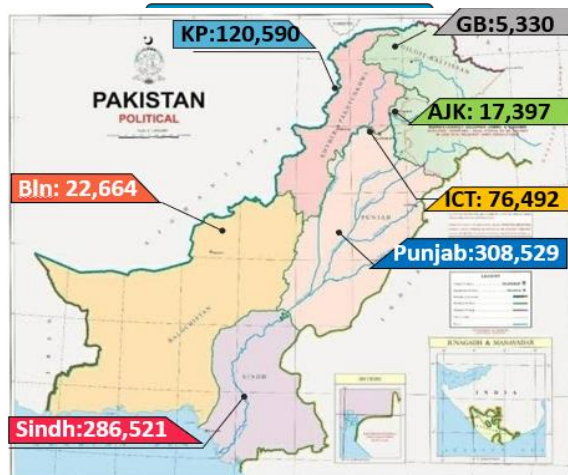
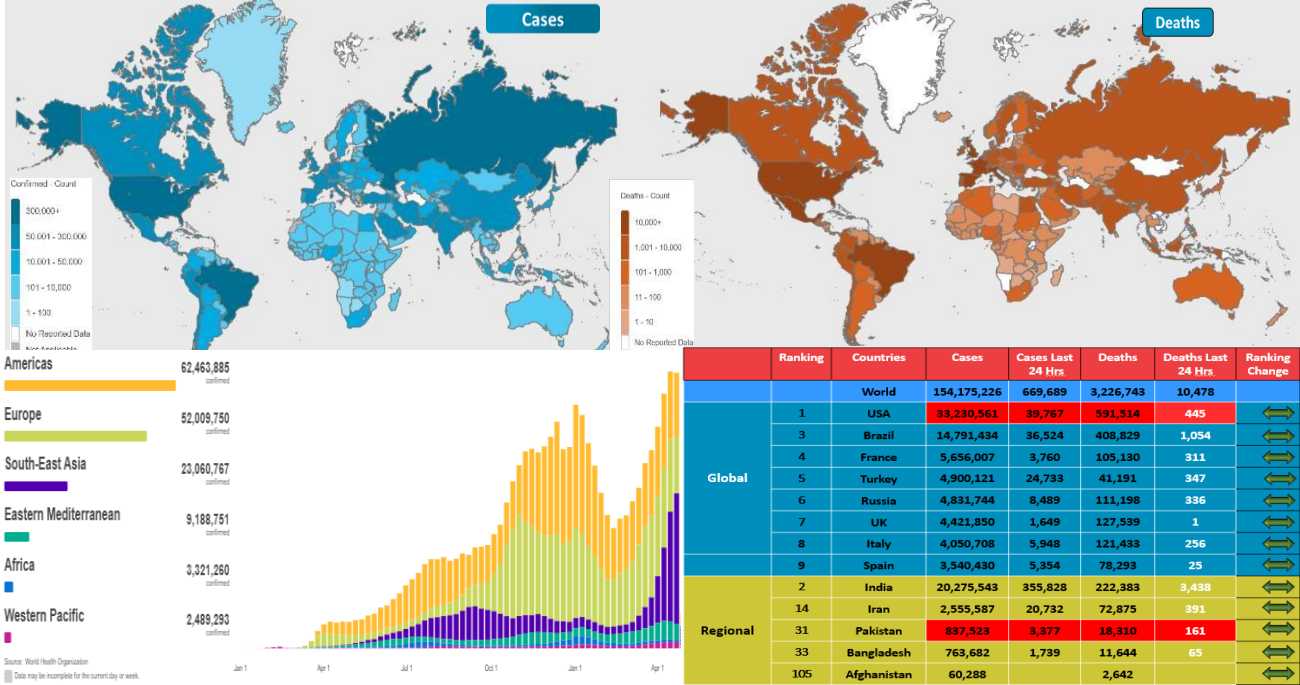




NATIONAL COMMAND AND OPERATIONS CENTRE SITUATION REPORT PART – I

Issued: 2:00 PM
4 May 2021

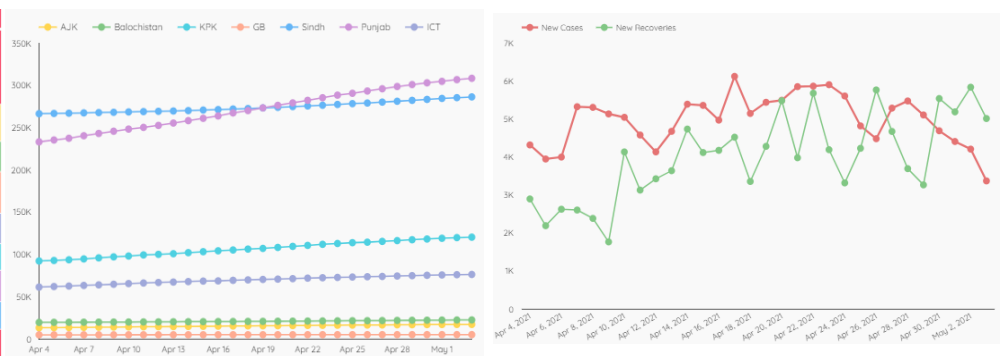
Global Update



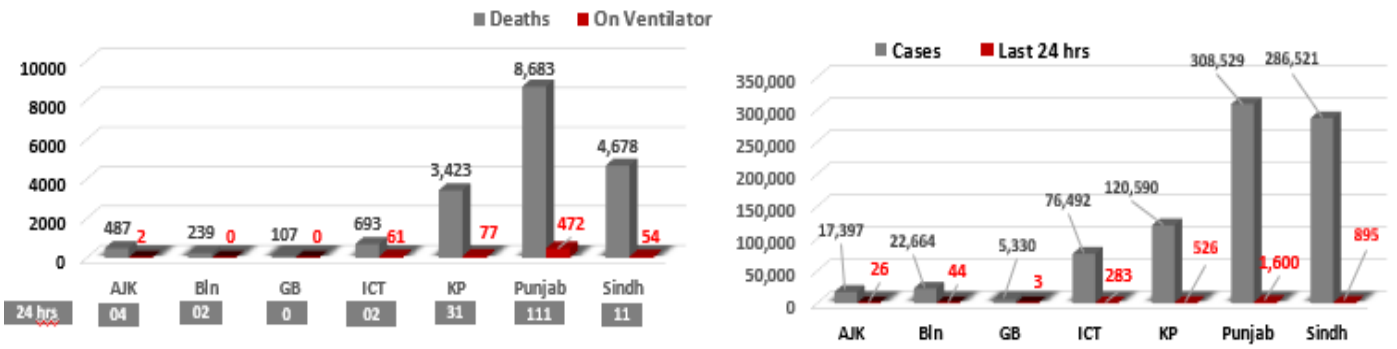
Province-Wise COVID Cases

Provinces	Lab Tests		Lab Confirmed Cases		
	Total Tests Conducted in Last 24 Hours	Total Tests Conducted till date	Previous	Last 24 hours	Cumulative
AJK	312	178,544	17,371	26	17,397
Balochistan	424	238,022	22,620	44	22,664
Gilgit Baltistan	392	111,413	5,327	03	5,330
ICT	3,596	1,488,679	76,209	283	76,492
KP	6,030	1,615,124	120,064	526	120,590
Punjab	14,137	4,653,219	306,929	1,600	308,529
Sindh	12,696	3,680,681	285,626	895	286,521
Total	37,587	11,965,682	834,146	3,377	837,523

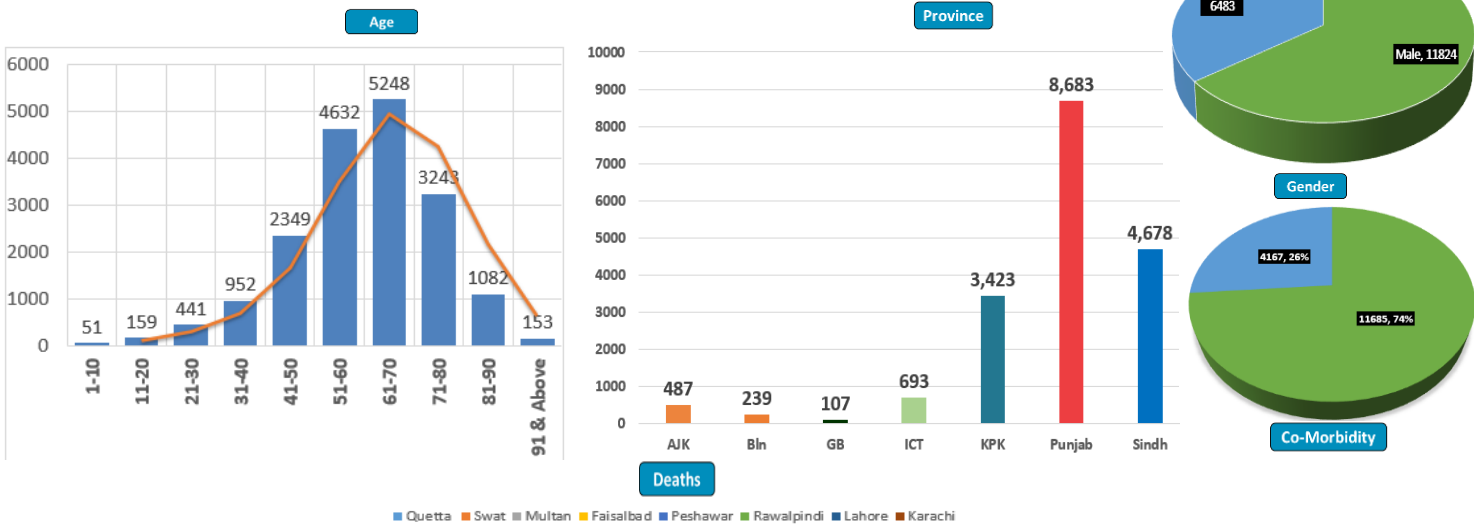
Cases Vs Recovery



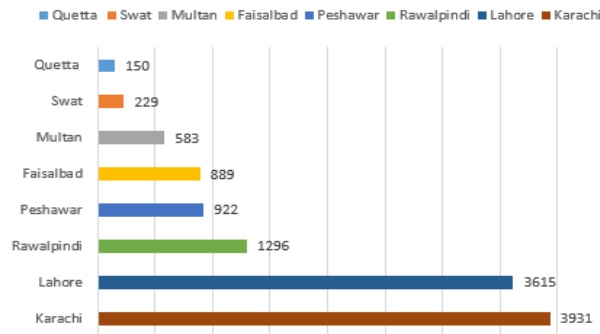
Clinical Status of COVID



Death Analysis

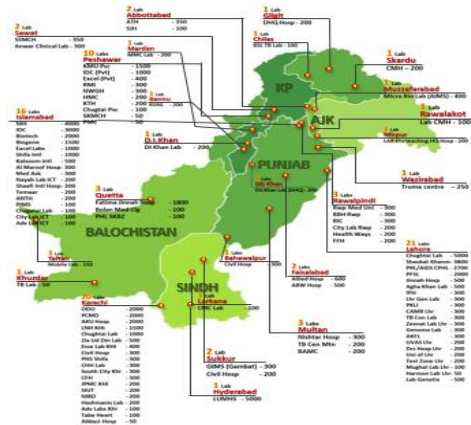
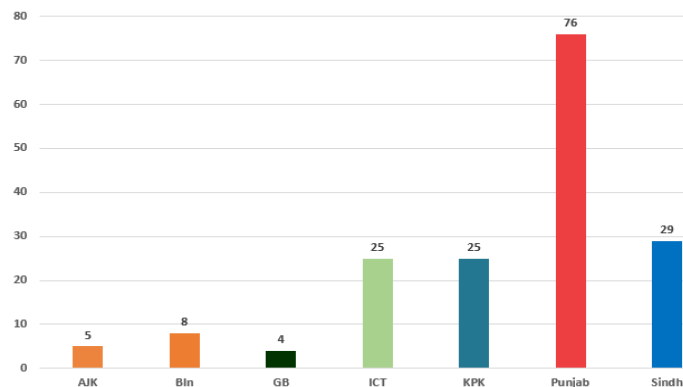


Deaths



Testing Facility

- Total Functioning Labs in Pakistan - 172
- Total Testing Capacity - 65,455
- Testing Conducted Last 24 hrs - 37,587



1. International

a. COVID Status

(1) 153,505,537 COVID cases 3,216,289 deaths have been reported across the globe.

b. Vaccine

(1) US biotech firm Novavax has said that it has started clinical trials of its COVID-19 vaccine on children.

(2) EU drug regulator has started evaluating Pfizer COVID vaccine for children ranging in age from 12 to 15.

c. Travel Restrictions & Lockdowns

(1) Kuwaiti bars unvaccinated citizens from travel abroad.

(2) Taiwan bars arrivals from India amid COVID crisis.

d. Disease Spread

(1) Indonesia has detected two cases of Indian COVID-19 variant.

(2) Morocco has detected its first two cases of the Indian COVID variant

(3) Algeria has detected its first cases of COVID variant discovered in India.

2. National

a. COVID Status

(1) National positivity ratio was recorded at 8.98 %.

(2) Pakistan has reported 5,018 COVID recoveries during last 24 hours

b. Vent Status

(1) 670 patients are on ventilators.

(2) **Vent occupancy in Lahore has been reported at 70%.** (68% day before yesterday)

(3) **74% vents allocated for COVID patients in Multan have been occupied.** (74% day before yesterday)

(4) **80% vents allocated for COVID patients in Mardan have been occupied.** (70% day before yesterday)

(5) **57% vents allocated for COVID patients in Gujranwala have been occupied** (57% day before yesterday)

(6) **50% vents allocated for COVID patients in Peshawar have been occupied.** (48% day before yesterday)

(7) **53% vents allocated for COVID patients in Bahawalpur have been occupied.** (67% day before yesterday)

- (8) **51% vents allocated for COVID patients in ICT have been occupied.**
(46% day before yesterday)

c. **Oxygen Status**

- (1) **65% beds allocated for COVID patients in Peshawar have been occupied** (71% day before yesterday)
- (2) **70% beds allocated for COVID patients in Mardan have been occupied.** (69% day before yesterday)
- (3) **56% beds allocated for COVID patients in Swabi have been occupied** (63% day before yesterday)
- (4) **60% beds allocated for COVID patients in Swat have been occupied** (61% day before yesterday)
- (5) **54% beds allocated for COVID patients in Nowshera have been occupied** (57% day before yesterday)
- (6) **54% beds allocated for COVID patients in Multan have been occupied.** (54% day before yesterday)
- (7) **43% beds allocated for COVID patients in ICT have been occupied** (51% day before yesterday)
- (8) **50% beds allocated for COVID patients in Gujranwala have been occupied** (50% day before yesterday)
- (9) **47% beds allocated for COVID patients in Rawalpindi have been occupied** (48% day before yesterday)
- (10) **59% beds allocated for COVID patients in Lahore have been occupied** (54% day before yesterday)

d. **HCW (Health Care Workers) Status**

- (1) 15 new cases have been reported in HCWs, increasing the total to **16,035** while **15,289** have recovered (592 active cases)
- (2) Most cases in HCWs have been reported by Sindh 5,693
- (3) 154 deaths have been reported amongst HCWs.

e. **COVID Mortality (79 x Deaths)**

- (1) 73 (92%) deaths have occurred in hospitals.
- (2) **42 deaths have been reported by KP.**
- (3) **08 deaths have been reported in District Lahore. Most by any district**
- (4) National CFR was reported at 1.87 %.
- (5) 70 % deceased suffered from co-morbidities.